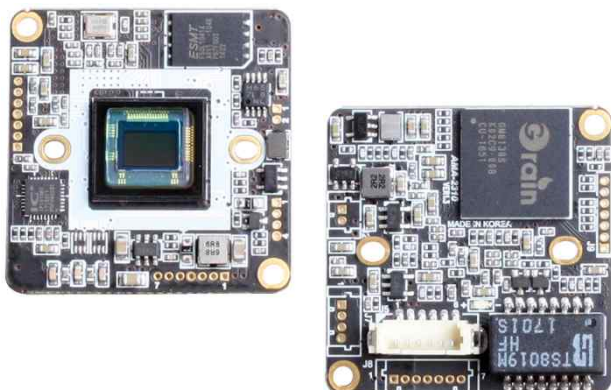


DCC-6110

CMOS IP VIDEO MODULE



Main Features

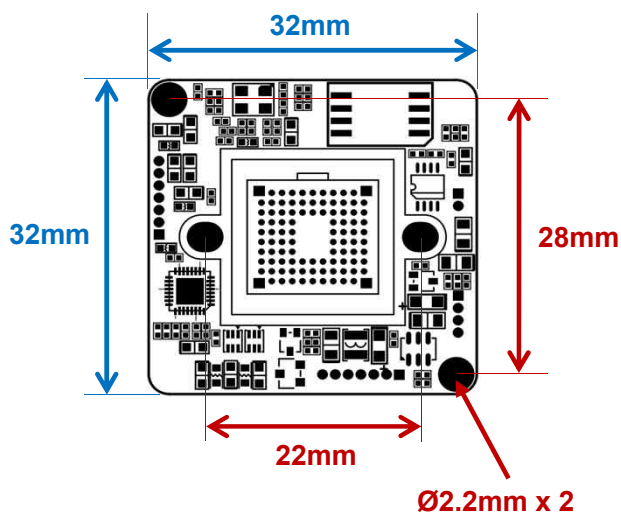
- 1/2.9" 2.8μm Pixel Progressive Sony Exmor CMOS Sensor
- 2Mega Pixels – Maximum 1080p (1920x1080)
- Mountable Lens: Fixed, Pinhole, Manual VF Lens
- TDN ICR Mechanism Available
- D-WDR, 3DNR Supported
- Onvif Ver. 2.4 Compatible
- Supported Video Codec: H.264, MPEG4, MJPEG



Specification

Model	DCC-6110
Signal System	IP (Network)
Pickup Device	1/2.9"(D-6.23mm) 2.1M SONY Exmor CMOS Sensor
Scanning System	Progressive Scan (16:9)
Sync. System	Internal
Total Pixels	2.24M [2000(H)x1121(V)]
Active Pixels	2.19M [1984(H)x1105(V)]
Min. Illumination	0.2Lux, 0.1Lux (ICR on)
Mechanical ICR	Available (Option)
H-Resolution	More than 1,000TV Lines(H)
S/N Ratio	More than 50dB (AGC off)
Video Out 1 (RJ45)	Up to 30fps @ 1920x1080p (1920x1080, 1280x1024, 1280x960, 1280x720, 1024x768, 640x480, 320x240)
Video Out 2	N/A
Lens	Option
Lens (Mount)	Board Mount(M12)
OSD	Via Webpage Viewer
Camera Title	Off, On(Max. 10 Characters)
Language	English, Korean
White Balance	Auto, Indoor, Outdoor, Fluorescent
HLC	Off, On
Day & Night Mode	Auto, Day, Night, EXT.
Electronic Shutter	1/25(30)~1/15,000sec
Noise Reduction	Off, On (1~63 Steps)
DSS(Sens-up)	N/A
Mirror	Off, On(Mirror, Flip, Both)
Other Features	Motion Detection(48 Zones), Privacy Mask(6 Zones) etc.
Network Protocol	TCP/IP, UDP/IP, RTP, RTSP, RTCP, NTP, HTTP DHCP, FTP, SMTP, DNS, DDNS Onvif 2.4 Compatible
At-a-time Access	Maximum 10 users
Video Codec	H.264, MPEG4, MJPEG (Triplex Streaming)
Sensor In/Alarm Out	N/A
Audio Line In/Out	N/A
Power Source	DC12V / POE
Power Consumption	Less than 2.5 Watts (170mA)
Operating Temp.	-10℃ ~ 55℃ (Humidity :0%RH ~ 90%RH)
Size (mm)	32(W) x 32(D) – 1 Board
Weight	10 g (Without OLPF)

Dimension



Option

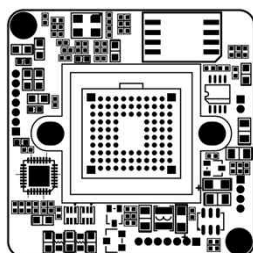
- OLPF
- Lens Holder
- Lens
- Mechanical TDN ICR
- POE Block Module

DCC-6110

CMOS IP VIDEO MODULE

Pin Connections

Board Front



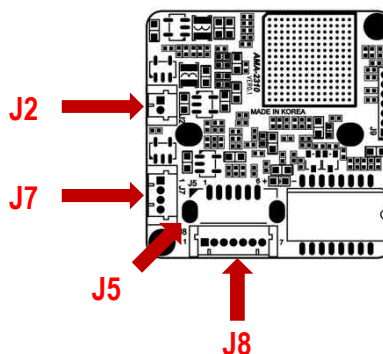
J2

J7

J5

J8

Board Rear



J5 – Power & LAN

No.	Pin Item	No.	Pin Item
1	VDD	2	GND
3	RDX-	4	RDX+
5	TDX-	6	TDX+

Wafer SMD type: 1.25mm pitch – 6 pin

Manufacturer: Yeonho

MFG Part Number: 12505WS-06

J8 – Status LED & POE

No.	Pin Item	No.	Pin Item
1	TxRx LED	2	LED OFF
3	FACT	4	GND
5	VDD	6	CTDX
7	CRDX		

Wafer DIP type: 1.25mm pitch – 7 pin

Manufacturer: Yeonho

MFG Part Number: 12512WS-07B

J7 – IR LED Board

No.	Pin Item	No.	Pin Item
1	DC12V	2	D&N OUT (TTL 3.3V)
3	EXT_DN (CDS)	4	GND

Wafer DIP type: 1.25mm pitch – 4 pin

Manufacturer: Molex / Yeonho

MFG Part Number: 53047-0410 / 12512WS-04B

J2 – TDN ICR

No.	Pin Item	No.	Pin Item
1	ICR (+)	2	ICR (-)

Wafer DIP type: 1.25mm pitch – 4 pin

Manufacturer: Yeonho

MFG Part Number: 12512WS-02B

CMOS IP VIDEO MODULE

• IP camera connection

Connect LAN cable to RJ45 jack of camera

Connect the other end LAN cable to RJ45 jack of router or hub

If you are not using POE switcher to provide the power to the IP camera, connect regulated a DC12V power adaptor to the IP camera.

Wait for about 50 seconds until the camera initialization is completed

Factory Default IP address is **192.168.1.30**

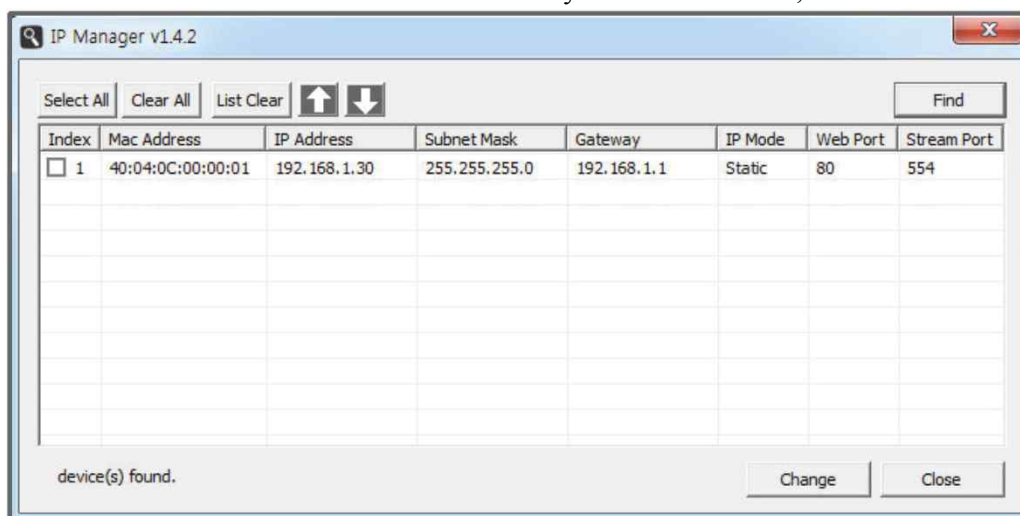
Factory Default ID & Password are **admin / admin.**

• Using IP manager

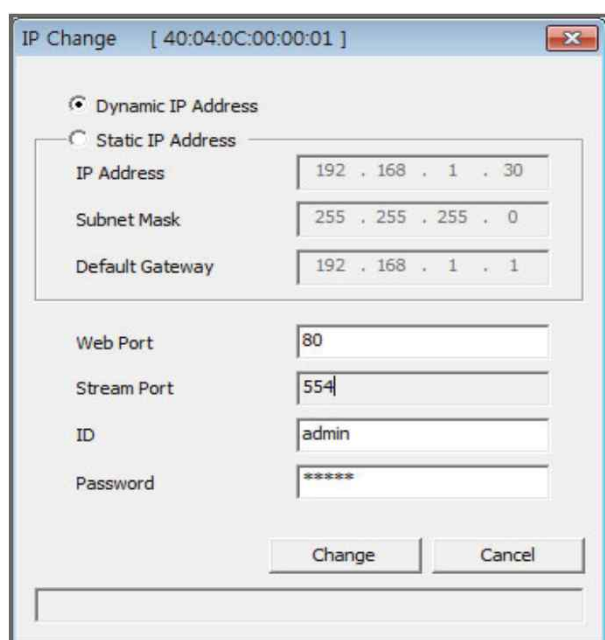
You can simply change the IP address by using 'IP Manager' provided.

Run IP manager as administrator.

click "Find" button when the IP camera is connected to your PC or network, all IP address will appear.



Choose & change the IP address of camera you want to change and click "change" Button



After click the "change" button left window will be appeared. Once you click "change" button, the camera will reboot for 10second.

After reboot the camera, the changed IP address will be applied and appeared.

• Checking Video by Web Viewer

Run web browser and Input the IP address which taken from IP manager.

• Supported O/S & Web Browser

- O/S : Windows7, 8, 10, MAC

- Browser : Internet Explorer 11 or higher, Firefox, Safari, Opera

* Monitoring videos can be operative only under IE with Active-X installation.