

DIV-F1K3A-2.8(P/P2)

PARANTEK

IP INDOOR DOME CAMERA

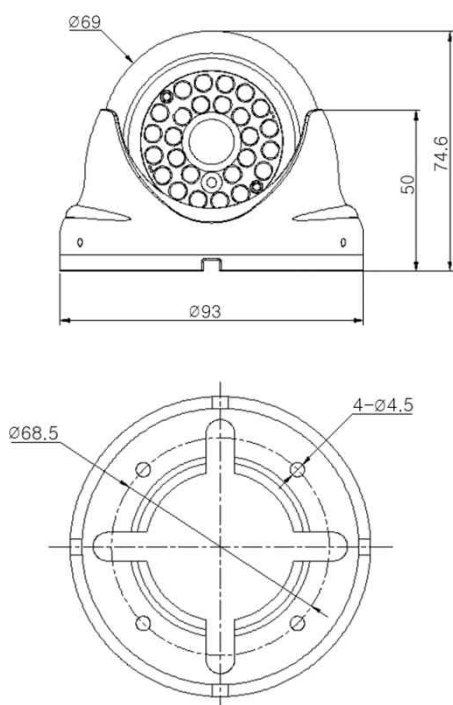


Main Features

- 1/2.8" 2.9µm Pixel Progressive Sony Starvis CMOS Sensor
- 2 Mega Pixels – Maximum 1080p (1920x1080)
- Fixed Board Lens
- WDR, DSS(Sens-up), 3DNR Supported
- Onvif Ver. 17.06 Compatible
- Built-in Microphone
- Supported Video Codec: H.264, MJPEG



Dimension



Option

- Lens (Fixed)
f=3.6mm, 4mm, 6mm, 8mm, 12mm, 16mm, 25mm

Specifications

Model	DIV-F1K3A-2.8	DIV-F1K3A-2.8P	DIV-F1K3A-2.8P2
Signal System	IP (Network) – RTOS		
Pickup Device	1/2.8”(D-6.46mm) 2.12M Sony CMOS Sensor		
Scanning System	Progressive Scan (16:9)		
Total Pixels	2.16MP [1,945(H)x1,109(V)]		
Active Pixels	2.12MP [1,937(H)x1,097(V)]		
Min. Illumination	0.1Lux, 0.003Lux(DSS on)		
Mechanical ICR	N/A		
Video Out (RJ45)	Up to 30fps @ 1920x1080p (1920x1080, 1280x720, 800x600, 704x480, 704x400, 640x480, 640x360, 320x240)		
Lens	Fixed f=2.8mm board type, F2.5		
Lens (Mount)	Board type (M12)		
Angle of View	124.5°(D), 105°(H), 59.5°(V)		
OSD	Via Webpage Viewer		
Camera Title	Off, On(Max. 8 Characters)		
Language	English		
White Balance	AUTO, AUTOext, Preset, Manual		
WDR	Off, On(Low, Middle, High) WDR can't work together with 3D-NR or DSS		
Day & Night Mode	Auto, Color, B&W		
Electronic Shutter	1/25(30)~1/30,000sec		
Noise Reduction	Off, On(Low, Middle, High) DNR can't work together with WDR or DSS		
DSS(Sens-up)	X32 DSS can't work together with WDR or DNR		
Mirror	Off, On(Mirror, Flip)		
Other Features	Motion Detection(4 Zones), Privacy Mask(8 Zones), Defog. Gamma Etc.		
Network Protocol	TCP/IP, UDP/IP, RTP, RTSP, RTCP, NTP, HTTP DHCP, FTP, SMTP, DNS, DDNS Onvif 17.06 Compatible		
At-a-time Access	Maximum 3 users		
Video Codec	H.264, MJPEG (Duplex Streaming)		
Sensor In/Alarm Out	N/A		
Audio Line In/Out	Microphone Input / No Output		
Power Source	DC12V	DC12V / POE	
Power Consumption	Less than 1.6 Watts (130mA)		
Operating Temp.	-10℃ ~55℃ (Humidity :0%RH ~ 90%RH)		
Size (mm)	69Ø (Dome Diameter)		
Weight	322g	340g	345g

DIV-F1K3A-2.8(P/P2)

IP INDOOR DOME CAMERA

• IP camera connection

Connect LAN cable to RJ45 jack of camera

Connect the other end LAN cable to RJ45 jack of router or hub

If you are not using POE switcher to provide the power to the IP camera, connect regulated a DC12V power adaptor to the IP camera.

Wait for about 30 seconds until the camera initialization is completed

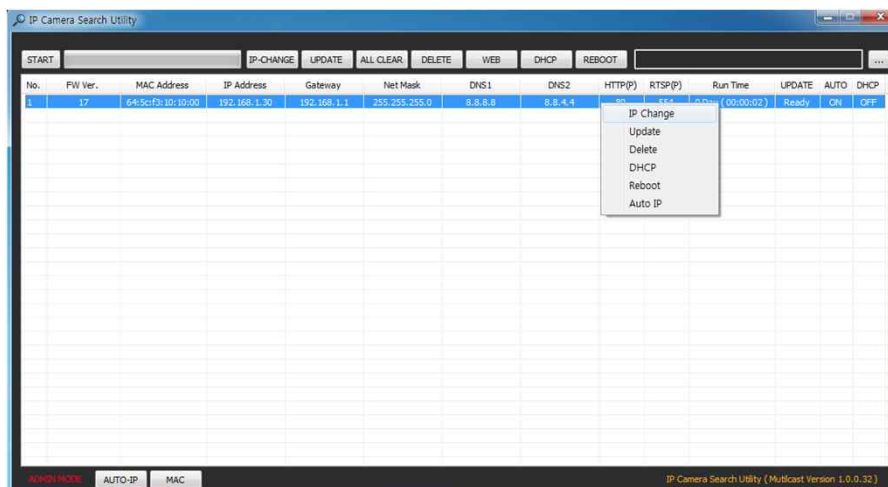
Factory Default IP address is **192.168.1.30**

Factory Default ID & Password are **admin / admin.**

• Using IP Search

You can simply change the IP address by using 'IP Search' provided.

Run IP Search as administrator. Click "START" button when the IP camera is connected to your PC or network, all IP address will appear.



Choose & change the IP address of camera you want to change and click "IP change"



After click the "IP Change" button left window will be appeared. Once you click "Apply" button, the camera will reboot for 10second.

After reboot the camera, the changed IP address will be applied and appeared.

• Checking Video by Web Viewer

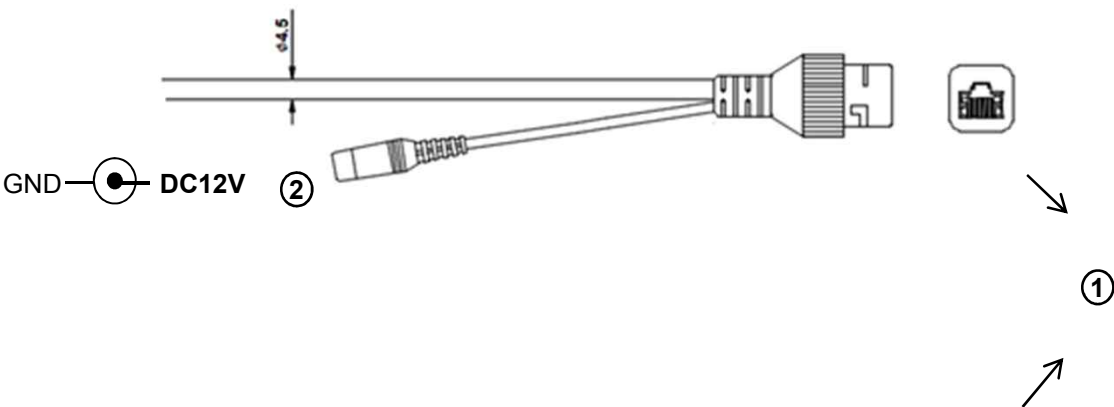
Run web browser and Input the IP address which taken from IP Search.

• Supported O/S & Web Browser

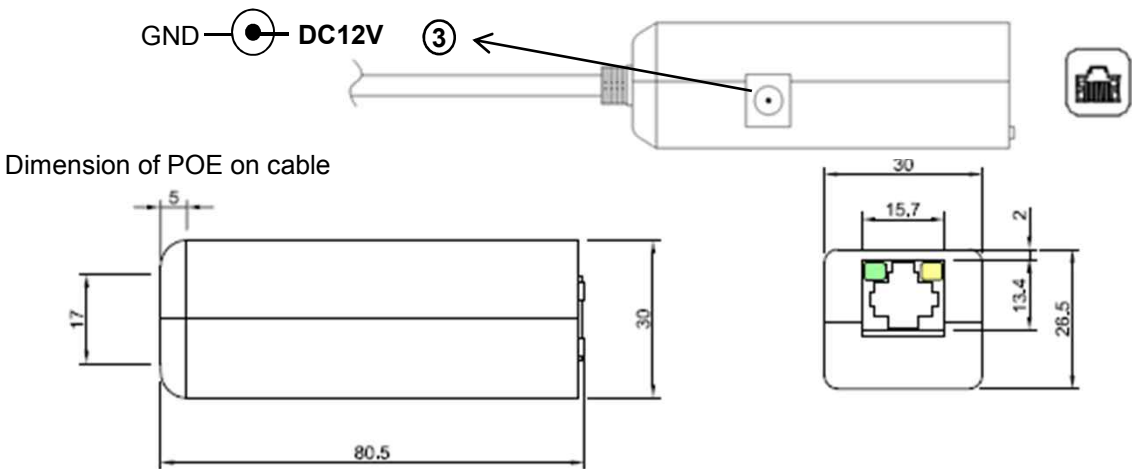
- O/S : Windows7, 8, 10, MAC
- Browser : Internet Explorer 11 or higher, Chrome , Firefox, Safari, Opera

Camera POE Cable Diagram

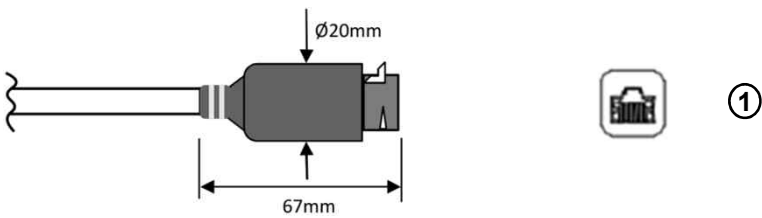
DIV-F963-3.6



DIV-F963-3.6P



DIV-F1K3A-2.8P2



	Function	I/O	Note	Remarks
①	VIDEO/POE/CONTROL	IN/OUT	H.264 video output, Power over Ethernet, Control (RJ45)	
②	POWER	IN	Camera power input (Required all the time)	DC12V
③	POWER	IN	Camera power input (Not required when POE works)	DC12V