

# DCC-2T0

## CMOS IP VIDEO MODULE

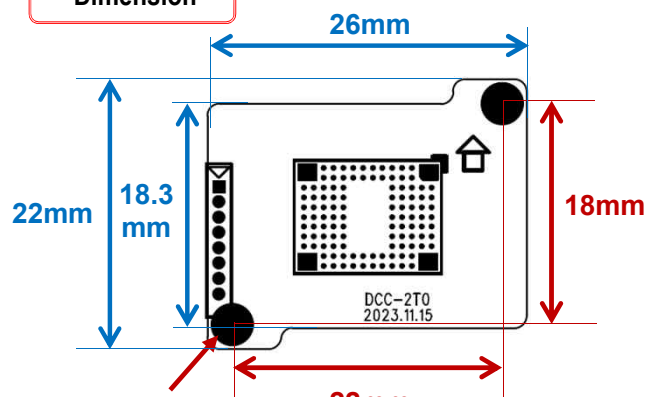


### Main Features

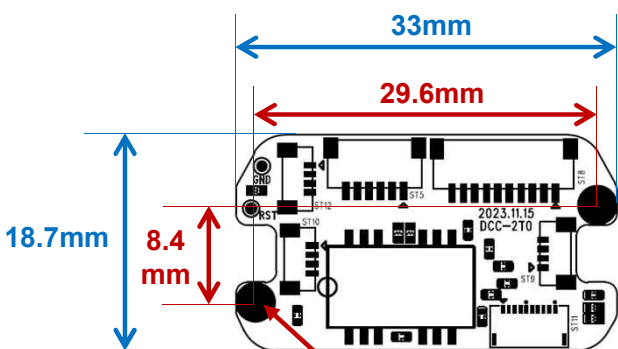
- 1/2.8" 2.9μm Pixel Progressive Sony Starvis CMOS Sensor
- 2 Mega Pixels – Maximum 1080p (1920x1080)
- WDR, DSS, 3D-NR Supported conditionally
- Onvif Ver. 17.06 Compatible (Profile-S)
- Supported Video Codec: H.264, MJPEG
- CMOS IP Video Module (26x22mm type, 2-boards)



### Dimension



Ø3.5(2.2mm hole x 2)  
PCB Coordinate  
(-11, -9) (11, 9)



Ø3.5(2.2mm hole x 2)  
PCB Coordinate  
(-14.8, 3.3) (14.8, -5.1)

### Option

- OLFP
- POE Board

### Specification

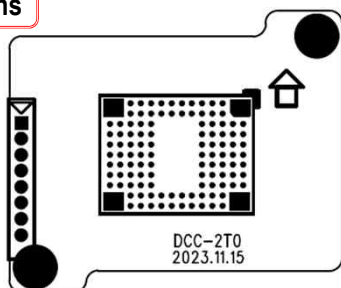
Model	DCC-2T0
Signal System	IP (Network)
Pickup Device	<b>1/2.8"(D-6.46mm) 2.12M Sony CMOS Sensor</b>
Scanning System	Progressive Scan (16:9)
Sync. System	Internal
Total Pixels	2.16MP [1,945(H)x1,109(V)]
Active Pixels	2.12MP [1,937(H)x1,097(V)]
Min. Illumination	0.1Lux, 0.003Lux (DSS on)
Mechanical ICR	N/A
Video Out 1 (RJ45)	<b>Up to 30fps @ 1920x1080p</b> (1920x1080, 1280x720, 800x600, 704x480, 704x400, 640x480, 640x360, 320x240)
Video Out 2	N/A
Lens	<b>Option</b>
Lens (Mount)	N/A (Need a case with a lens holder)
OSD	Via Webpage Viewer
Camera Title	Off, On(Max. 8 Characters)
Language	English
White Balance	AUTO, AUTOext, Preset, Manual
BLC	Off, BLC, HLC, WDR(Low, Middle, High) WDR can't work together with 3D-NR or DSS
Day & Night Mode	Auto, Color, B&W
Electronic Shutter	1/25(30)~1/30,000sec
Noise Reduction	Off, On(Low, Middle, High) DNR can't work together with WDR or DSS
DSS(Sense-up)	<b>X32</b> DSS can't work together with 3D-NR or WDR
Mirror	Off, On(Mirror, Flip)
Other Features	Motion Detection(4 Zones), Privacy Mask(8 Zones), Defog. Gamma Etc.
Network Protocol	TCP/IP, UDP/IP, RTP, RTSP, RTCP, NTP, HTTP DHCP, FTP, SMTP, DNS, DDNS Onvif 17.06 Compatible
At-a-time Access	Maximum 3 users
Video Codec	H.264, MJPEG (Duplex Streaming)
Sensor In/Alarm Out	N/A
Audio In/Out	N/A
Power Source	DC5V / POE(Optional)
Power Consumption	Less than 1.4 Watts (270mA)
Operating Temp.	-10℃ ~ 55℃ (Humidity :0%RH ~ 90%RH)
Size (mm)	<b>26x22mm &amp; 33x18.7mm 2-boards</b>
Weight	4.5 g (Without OLFP)

# DCC-2T0

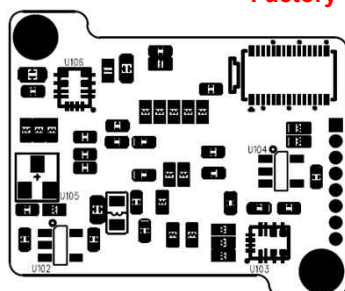
## CMOS IP VIDEO MODULE

### Pin Connections

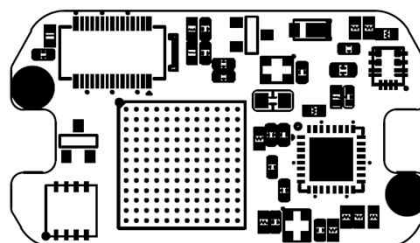
CMOS Board Top



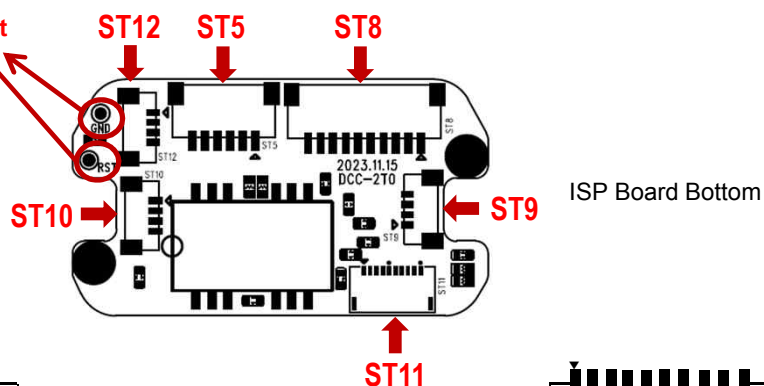
CMOS Board Bottom



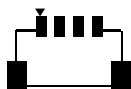
**Factory Reset :**  
You can factory reset the DCC-2T0 by making short GND and RST TP points.



ISP Board Top



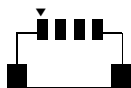
### ST12



No.	Pin Item	No.	Pin Item
1	DC 3.3V	3	I2C – SCL
2	I2C – SDA	4	GND

Wafer SMD type: **1.0mm pitch – 4 pin**  
Manufacturer: **JST**  
MFG Part Number: **SM04B-SURS-TF**

### ST10



No.	Pin Item	No.	Pin Item
1	Illumination +	3	DC 3.3V
2	Illumination -	4	Laser

Wafer SMD type: **1.0mm pitch – 4 pin**  
Manufacturer: **JST**  
MFG Part Number: **SM04B-SURS-TF**

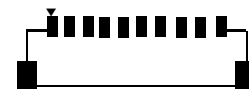
### ST5 – Ethernet



No.	Pin Item	No.	Pin Item
1	DC 5V	4	RXD – (Ethernet)
2	TXD – (Ethernet)	5	RXD + (Ethernet)
3	TXD + (Ethernet)	6	GND

Wafer SMD type: **1.0mm pitch – 6 pin**  
Manufacturer: **JST**  
MFG Part Number: **SM06B-SRSS-TB**

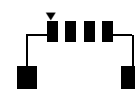
### ST8



No.	Pin Item	No.	Pin Item
1	DC 3.3V	6	SW Laser 2
2	I2C – SDA	7	Illumination +
3	I2C – SCL	8	Illumination -
4	GND	9	RST MF3
5	SW Laser 1	10	Signal CLK

Wafer SMD type: **1.0mm pitch – 10 pin**  
Manufacturer: **JST**  
MFG Part Number: **SM10B-SRSS-TB**

### ST9



No.	Pin Item	No.	Pin Item
1	Illumination +	3	DC 3.3V
2	Illumination -	4	Laser

Wafer SMD type: **1.0mm pitch – 4 pin**  
Manufacturer: **JST**  
MFG Part Number: **SM04B-SURS-TF**

### ST11



No.	Pin Item	No.	Pin Item
1	RST MF3	6	GND
2	NC	7	I2C – SDA
3	NC	8	DC 3.3V
4	NC	9	I2C – SCL
5	NC	10	NC

Wafer SMD type: **0.5mm pitch – 10 pin**  
Manufacturer: **Molex**  
MFG Part Number: **503480-1000**

## CMOS IP VIDEO MODULE

### • IP camera connection

Connect LAN cable to RJ45 jack of camera

Connect the other end LAN cable to RJ45 jack of router or hub

If you are not using POE switcher to provide the power to the IP camera, connect regulated a DC12V power adaptor to the IP camera.

Wait for about 30 seconds until the camera initialization is completed

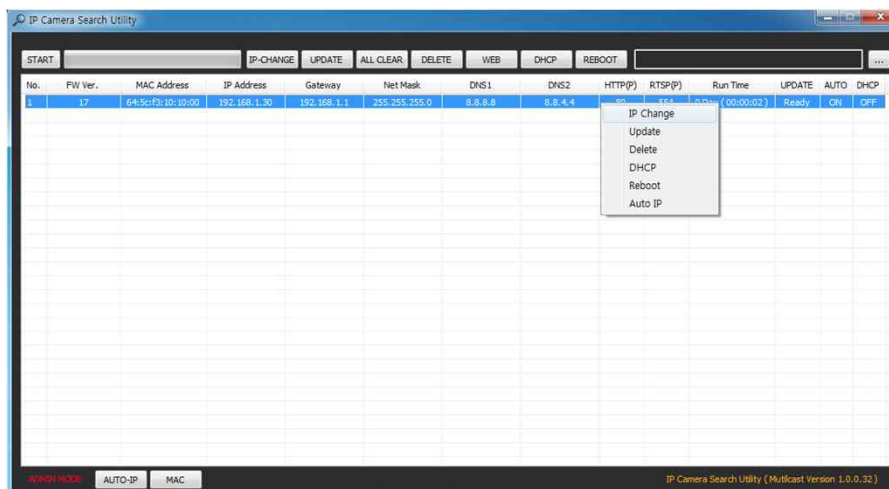
Factory Default IP address is **192.168.1.30**

Factory Default ID & Password are **admin / admin.**

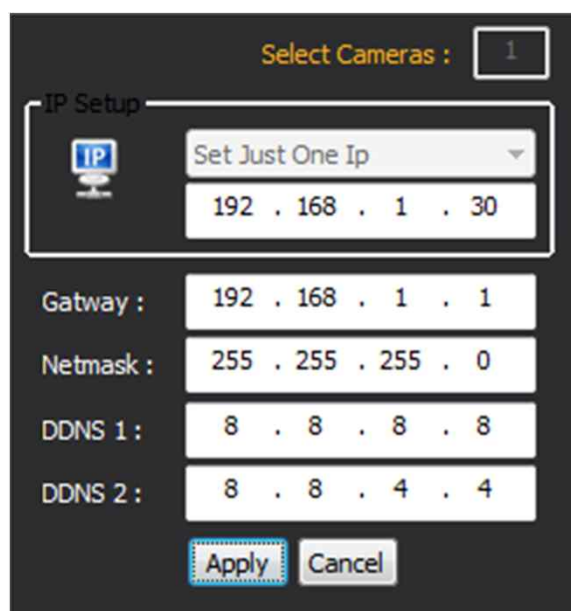
### • Using IP Search

You can simply change the IP address by using 'IP Search' provided.

Run IP Search as administrator. Click "START" button when the IP camera is connected to your PC or network, all IP address will appear.



Choose & change the IP address of camera you want to change and click "IP change"



After click the "IP Change" button left window will be appeared. Once you click "Apply" button, the camera will reboot for 10second.

After reboot the camera, the changed IP address will be applied and appeared.

### • Checking Video by Web Viewer

Run web browser and Input the IP address which taken from IP Search.

### • Supported O/S & Web Browser

- O/S : Windows7, 8, 10, MAC
- Browser : Internet Explorer 11 or higher, Chrome , Firefox, Safari, Opera