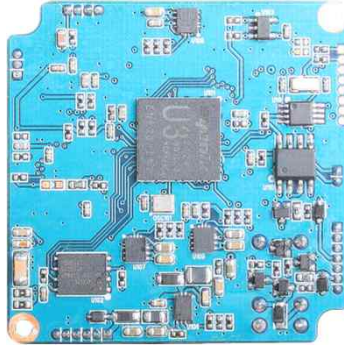


# DCA-BI100

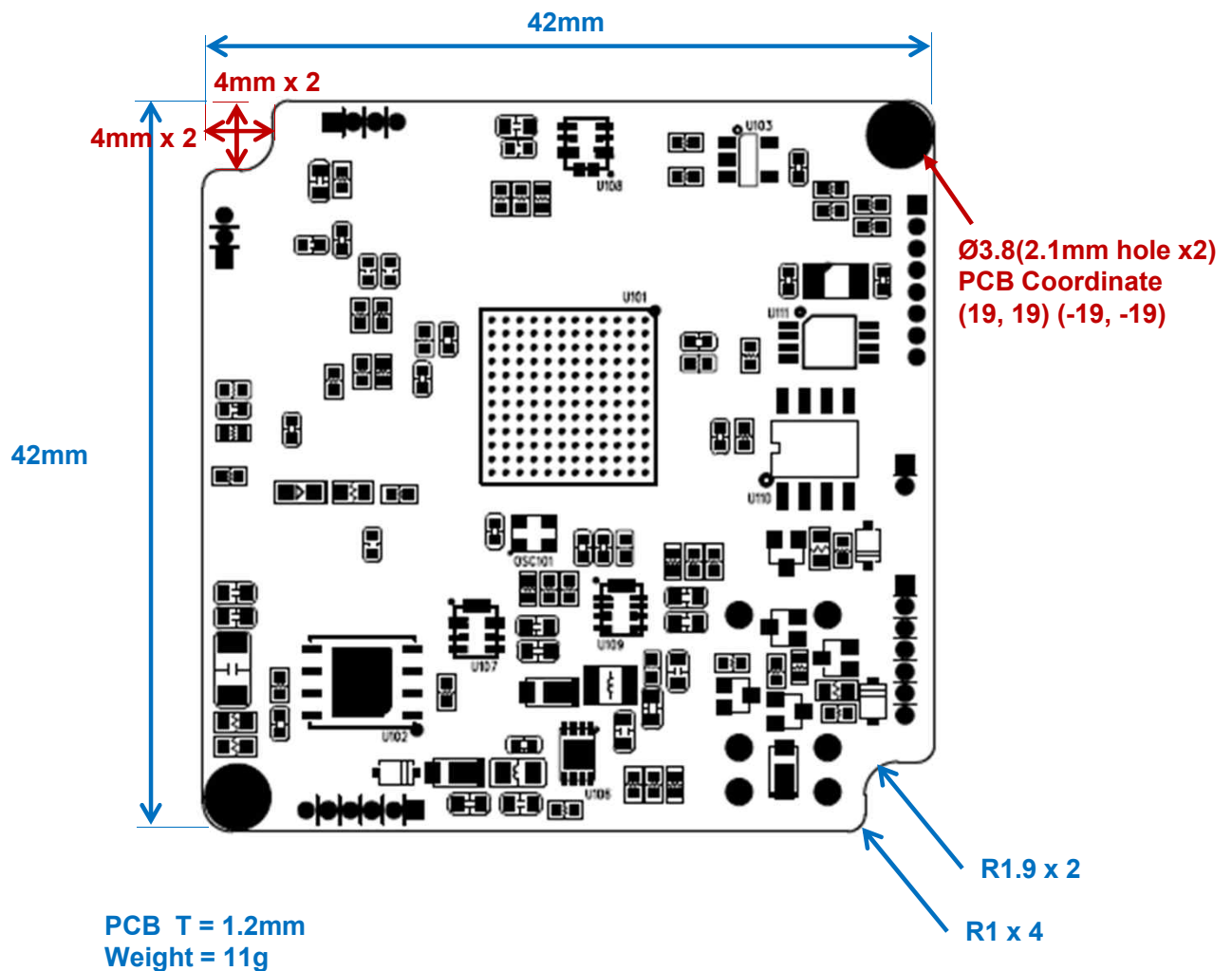
## BT1120 TO IP BOARD



### Main Features

- IP Encoding Board for BT.1120 output Module
- Audio In/Out (Mainly Line Format)
- RS485 Out (One-way Out Mode)
- Alarm In/Out (2 Independent Inputs, 1 Output)
- Micro-SD Memory Card (Video Saving)
- Factory/System Reset
- 42x42mm Type 1-board

### Dimension

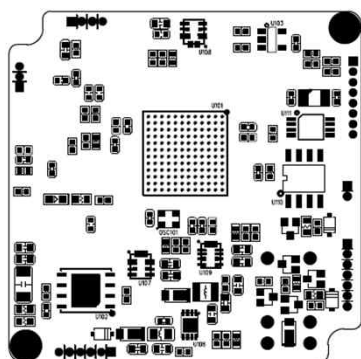


# DCA-BI100

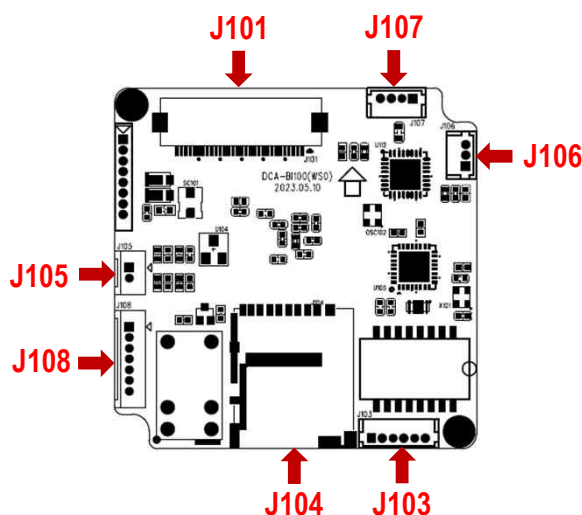
## BT1120 TO IP BOARD

### Pin Connections

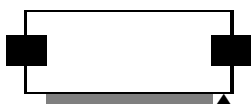
Board Front



Board Rear



### J102 – BT.1120 & Etc.



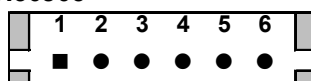
No.	Pin Item	No.	Pin Item
1	C7 (In)	16	Y3 (In)
2	C6 (In)	17	Y2 (In)
3	C5 (In)	18	Y1 (In)
4	C4 (In)	19	Y0 (In)
5	C3 (In)	20	GND
6	C2 (In)	21	nRESET (Out) Camera Reset
7	C1 (In)	22	GPIO (In)
8	C0 (In)	23	GND
9	GND	24	DC12V (Out)
10	PIXEL CLOCK	25	DC12V (Out)
11	GND	26	DC12V (Out)
12	Y7 (In)	27	Reserved
13	Y6 (In)	28	Reserved
14	Y5 (In)	29	RXD (In)
15	Y4 (In)	30	TXD (Out)

Wafer SMD type: 0.5mm pitch – 30 pin

Manufacturer: Yeonho

MFG Part Number: 05002HR-H30J05

### J103 – Ethernet



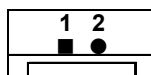
No.	Pin Item	No.	Pin Item
1	DC 12V	4	RXD + (Ethernet)
2	GND	5	TXD – (Ethernet)
3	RXD – (Ethernet)	6	TXD + (Ethernet)

Wafer DIP type: 1.25mm pitch – 6 pin

Manufacturer: Molex

MFG Part Number: 53047-0610

### J105 – RS485



No.	Pin Item	No.	Pin Item
1	RS485 ( + )	2	RS485 ( - )

Wafer DIP type: 1.25mm pitch – 2 pin

Manufacturer: Yeonho

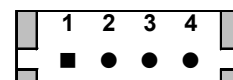
MFG Part Number: 12512WS-02B

### J104 – SD Card Slot

Manufacturer: Hirose

MFG Part Number: DM3AT-SF-PEJM5(21)

### J107 – Audio



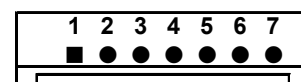
No.	Pin Item	No.	Pin Item
1	LINE IN	3	LINE OUT
2	GND	4	GND

Wafer DIP type: 1.25mm pitch – 4 pin

Manufacturer: Molex

MFG Part Number: 53047-0410

### J108 – ALARM IN/OUT



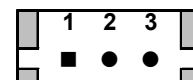
No.	Pin Item	No.	Pin Item
1	N/O (Normal Open)	5	GND
2	N/C (Normal Close)	6	ALARM 2 IN
3	COM (Common)	7	GND
4	ALARM 1 IN		

Wafer DIP type: 1.25mm pitch – 7 pin

Manufacturer: Yeonho

MFG Part Number: 12512WS-07B

### J106 – Reset



No.	Pin Item	No.	Pin Item
1	Factory Default	3	GND
2	SW_Reset		

Wafer DIP type: 1.25mm pitch – 3 pin

Manufacturer: Molex

MFG Part Number: 53047-0310