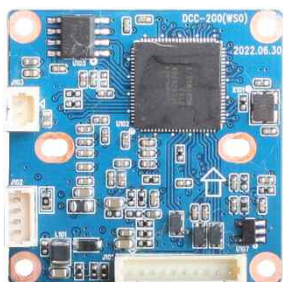
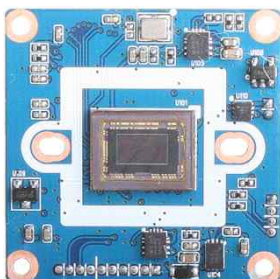


DCC-2G30

CMOS USB VIDEO MODULE

USB 2.0
CAMERA

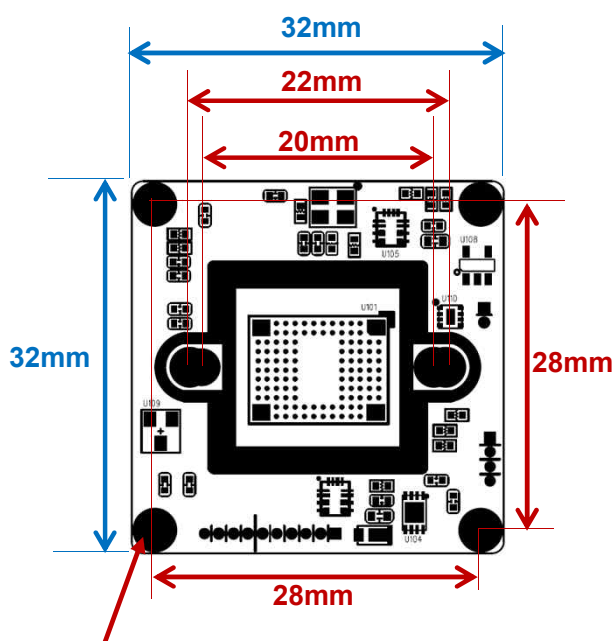


Main Features

- 1/2.8" 2.9µm Pixel Progressive Sony Starvis CMOS Sensor
- 2 Mega Pixels – Maximum 1080p (1920x1080)
- Mountable Lens: Fixed IRIS
- Mechanical TDN ICR Available
- USB2.0 Compliant
- Best for ATM, Kiosk, POS, Face Recognition, Gaming Applications
- CMOS Video Module (32x32mm 1-board)



Dimension



Ø3.6(2.1mm hole x 4)
PCB Coordinate
(-14, 14) (14, -14)
(14, 14) (-14, -14)

PCB T=1.2mm

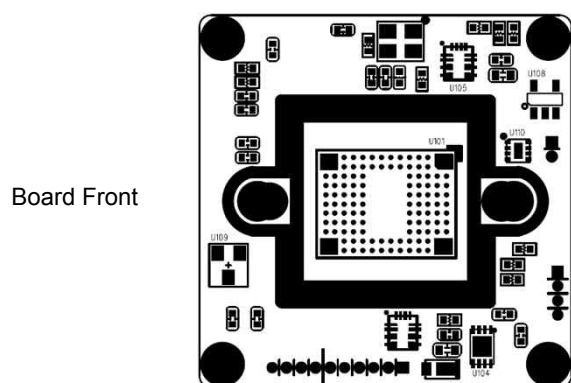
Option

- OLPF, TDN ICR
- Lens
- USB Cable (USB2.0)
 - 70cm, 1.5m, 3m

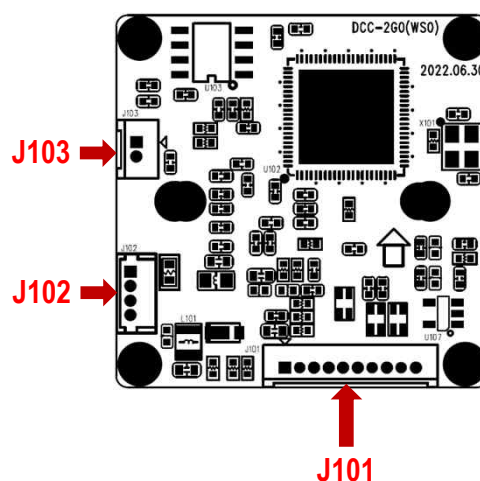
Specification

Model	DCC-2G0	DCC-2G30
Signal System	MJPEG Encoded (USB2.0)	
Pickup Device	1/2.8"(D-6.46mm) 2.12M Sony CMOS Sensor	
Scanning System	Progressive Scan (16:9)	
Sync. System	Internal	
Total Pixels	2.16MP [1,945(H)x1,109(V)]	
Active Pixels	2.12MP [1,937(H)x1,097(V)]	
Min. Illumination	0.1Lux, 0.05Lux (ICR on)	
Mechanical ICR	Available (Option)	
Video Out	MJPEG: 1080/720p/VGA/CIF	
Capturing Speed	Max. 25/30fps (50/60Hz)	Max. 50/60fps (50/60Hz)
Lens	Fixed IRIS Lens	
Lens (Mount)	Board/Pinhole Mount(M12) & C/CS Mount	
OSD	N/A	
Exposure	Auto	
White Balance	Auto	
Day & Night Mode	Color, B/W or EXT (Factory Selectable),	
Gain Control	Auto	
Electronic Shutter	Auto	
Mirror	Off (Factory Default)	
Supported O/S	UVC Compatible O/S - Windows, Linux, Mac, Android etc.	
No. of Camera ID	Available	
Power Source	DC5V via USB	
Power Consumption	Less than 1.3 Watts (260mA @DC5V, w/o LED)	Less than 1.5 Watts (300mA @DC5V, w/o LED)
Operating Temp.	-10℃ ~ 55℃ (Humidity :0%RH ~ 90%RH)	
Size (mm)	32(W) x 32(D) – 1 Board	
Weight	5 g (Without OLPF)	

Pin Connections

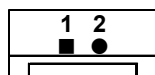


Board Front



Board Rear

J103 – TDN ICR



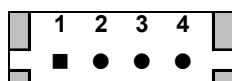
No.	Pin Item	No.	Pin Item
1	ICR (+)	2	ICR (-)

Wafer DIP type: **1.25mm pitch – 2 pin**

Manufacturer: **Yeonho**

MFG Part Number: **12512WS-02B**

J102 – LED



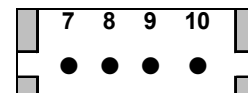
No.	Pin Item	No.	Pin Item
1	LED VCC	3	EXT_DN
2	GND	4	LED_CTL

Wafer DIP type: **1.25mm pitch – 4 pin**

Manufacturer: **Molex**

MFG Part Number: **53047-0410**

J101



No.	Pin Item	No.	Pin Item
7	USB 5V	9	DP
8	DM	10	GND

Wafer DIP type: **1.25mm pitch – 4 pin**

Manufacturer: **Molex**

MFG Part Number: **53047-0410**

(DCC-2G0 – USB2.0)