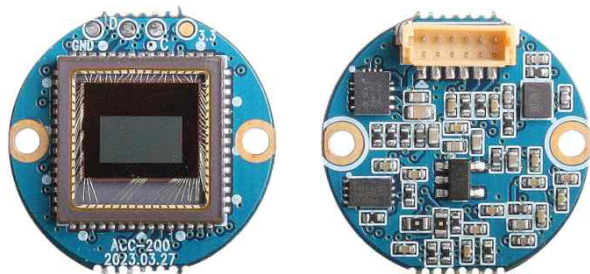


# ACC-2Q0

## CMOS VIDEO MODULE

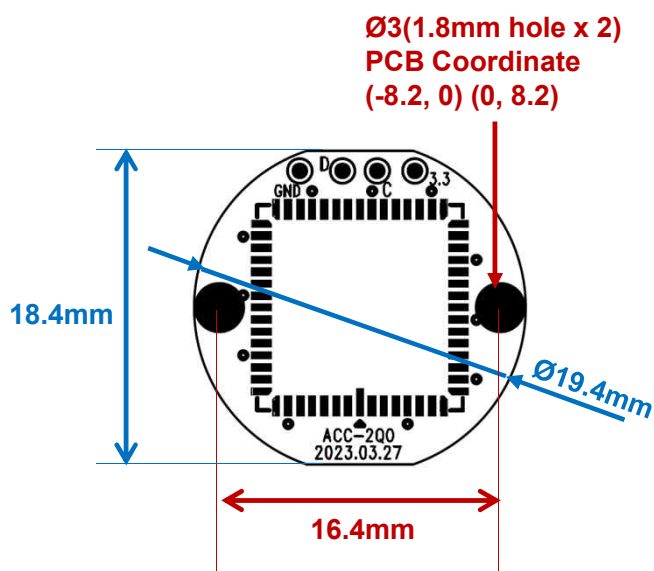


### Main Features

- 1/2.7" 3μm Pixel Progressive Color WDR CMOS Sensor
- 2.07M Pixels – Maximum 1080p (1920x1080p)
- Mountable Lens: Fixed IRIS Lens
- 2D-DNR Supported
- Operation Voltage : DC3.3V
- UTC Supported
- AHD2.0 Camera (Differential Output)



### Dimension



PCB T = 1.2mm

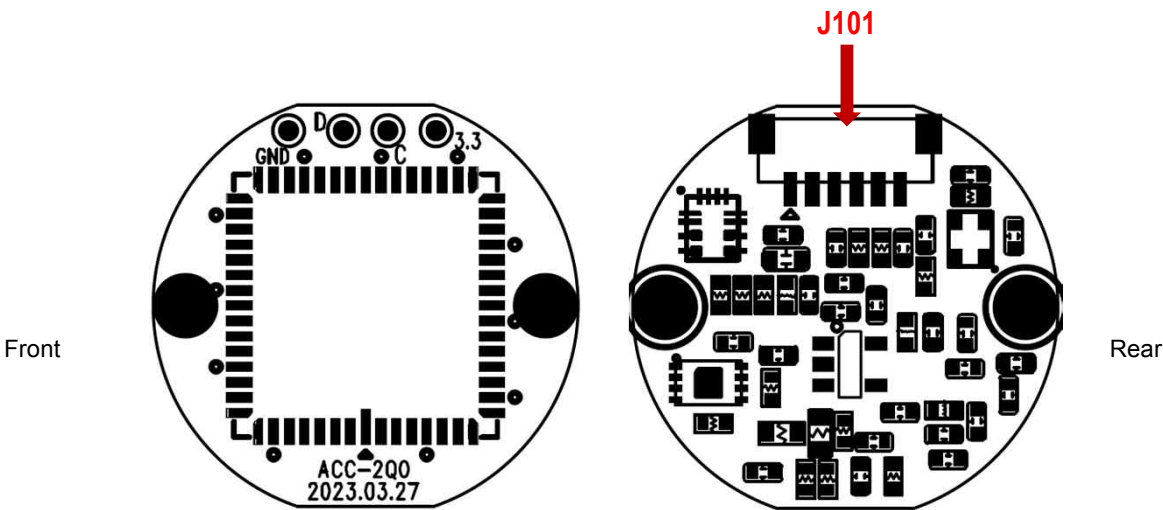
### Specifications

Model	ACC-2Q0
Signal System	AHD 2.0
Pickup Device	1/2.7"(D-6.6mm) 2.09M CMOS Sensor
Scanning System	Progressive Scan (16:9)
Sync. System	Internal
Total Pixels	2.27MP [2026(H)x1122(V)]
Active Pixels	2.09MP [1928(H)x1088(V)]
Min. Illumination	2.0Lux(F2.0 – 30IRE)
Mechanical ICR	N/A
Resolution	1080p@25/30
Video Out (BNC)	AHD: 1080p@25/30
Lens	Fixed IRIS lens
Lens (Mount)	Lens Holder is not available. Housing with a lens holder is required
OSD	Via UTC
Exposure	AE
White Balance	AWB
BLC	N/A
Day & Night Mode	Color(Default), Auto, B/W
Gain Control	Auto (Off, Low, Mid, High)
Electronic Shutter	1/50(60) ~ 1/2,000sec
DSS(Sens-up)	N/A
Noise Reduction	2DNR
Mirror	Off(Default), On(H, V, H/V)
Other Features	-
Microphone	N/A
Power Source	DC 3.3V ±5%
Power Consumption	Less than 0.85 Watts (250mA@DC3.3V)
Operating Temp.	-10℃ ~ 55℃ (Humidity :0%RH ~ 90%RH)
Size (mm)	19.4Ø (1-board)
Weight	2.0 g (Without OLPF)

# ACC-2Q0

## CMOS VIDEO MODULE

### Pin Connections



J101



No.	Pin Item	No.	Pin Item
1	DC3.3V	2	GND
3	AHD Positive	4	AHD Negative
5	SCL_S	6	SDA_S

Wafer Type: **1mm pitch – 6 pin /SMD**

Manufacturer: **JST**

MFG Part Number: **BM06B-SRSS-TB**