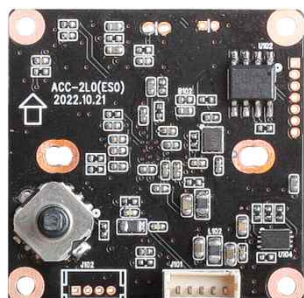
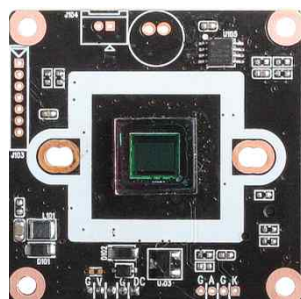


# ACC-2L0

## CMOS VIDEO MODULE

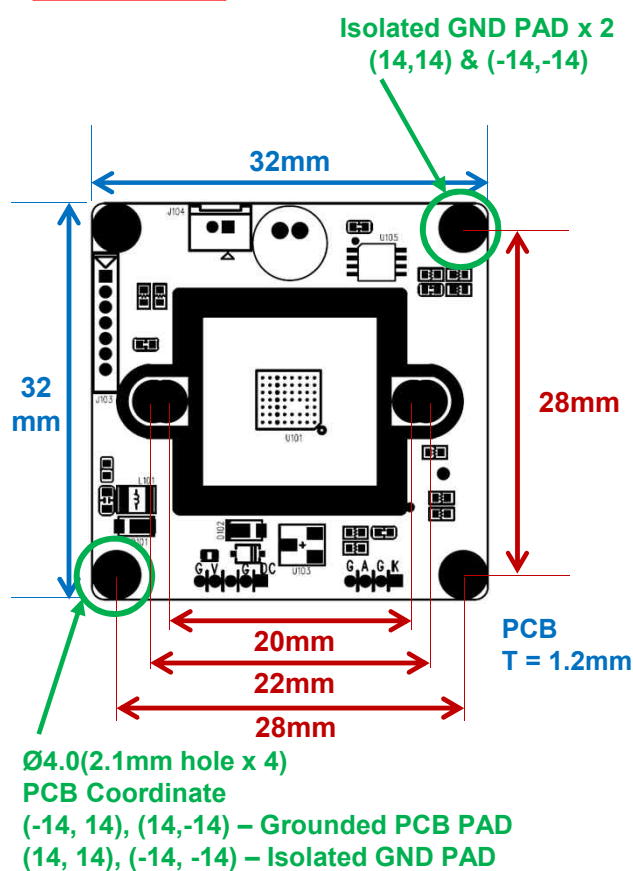


### Main Features

- 1/4" 5.6μm Pixel Color CMOS Sensor
- Approx. 0.36 Mega Pixels
- Mountable Lens: Fixed, Pinhole, Manual VF, C/CS Lens
- Supported Lens: Fixed IRIS Lens
- DSS(Sesn-Up) & 2D-DNR Supported
- Audio (ACC-2L0A)
- Wide Running Voltage: DC5~12V
- CMOS Video Module (32x32mm 1-board)



### Dimension



### Specification

Model	ACC-2L0	
Signal System	NTSC	PAL
Pickup Device	1/4"(D-4.85mm) 0.36M CMOS Sensor	
Scanning System	Interlaced Scan (4:3 )	
Sync. System	Internal	
Total Pixels	0.37MP [692(H)x544(V)]	
Active Pixels	0.36MP [688(H)x528(V)]	
Min. Illumination	0.5Lux(F2.5 - 30IRE)	
Mechanical ICR	N/A	
Video Out	CVBS (D1)	
Lens	Fixed IRIS Lens	
Lens (Mount)	Board, Pinhole, Manual VF (M12), C/CS	
OSD	Via 5-direction OSD Tact-switch or AD Key	
Camera Title	N/A	
Language	English, Chinese(Simplified)	
Exposure	AE, Manual	
White Balance	Auto, Indoor, Outdoor, User	
BLC	Off, On	
Day & Night Mode	Color, B/W	
Gain Control	Off, Low, Middle, High	
Electronic Shutter	Auto, Manual (1/100~1/100,000)	
DSS(Sens-up)	Yes (Max. X4)	
Noise Reduction	2DNR (Off, Low, Middle, High)	
Mirror	Off, H, V, H/V	
Other Features	-	
Communication	N/A	
Microphone	Yes (Option – ACC-2L0A)	
Power Source	DC 5~12V	
Power Consumption	Less than 0.42 Watts (35mA@DC12V)	
Operating Temp.	-10℃ ~ 55℃ (Humidity :0%RH ~ 90%RH)	
Size (mm)	32x32 1-board	
Weight	4.5 g	

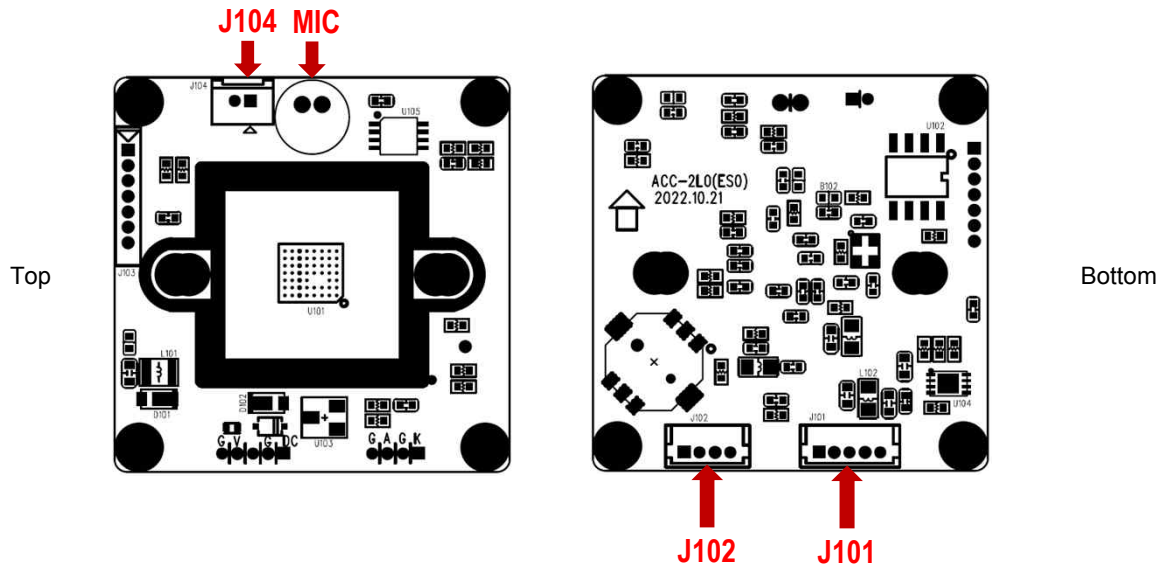
### Option

- OLPF (IR-Cut, 940nm Dual-pass)
- Lens Holder
- Lens

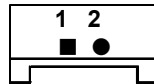
# ACC-2L0

## CMOS VIDEO MODULE

### Pin Connections



#### J104 – Audio



No.	Pin Item	No.	Pin Item
1	MIC (IN)	2	GND

Wafer DIP type: **1.25mm pitch – 2 pin**

Manufacturer: **Yeonho**

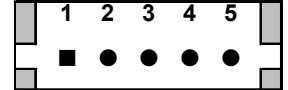
MFG Part Number: **12512WS-02B**

#### MIC - Audio



No.	Pin Item	No.	Pin Item
1	MIC (IN)	2	GND

#### J101 – Input/Output



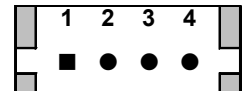
No.	Pin Item	No.	Pin Item
1	DC5~12V (IN)	4	VIDEO (OUT)
2	GND	5	GND
3	N/C		

Wafer Type: **1.25mm pitch – 5 pin /DIP**

Manufacturer: **Molex**

MFG Part Number: **53047-0510**

#### J102 – AD & Audio



No.	Pin Item	No.	Pin Item
1	AD KEY (IN)	3	AUDIO (OUT)
2	GND	4	GND

Wafer DIP type: **1.25mm pitch – 4 pin / DIP**

Manufacturer: **Molex**

MFG Part Number: **53047-0410**

SETUP MENU	SUB MENU 1	SUB MENU 2	SUB MENU 3	VALUE
EXPOSURE	LENS TYPE			FIX
	SHUTTER			NTSC/PAL : AUTO,1/100,200,250,500,1K,2K,4K,10K,100K
	AGC			OFF/LOW/MIDDLE/HIGH
	SENS-UP			OFF/LOW/MIDDLE/HIGH
	EXPOSURE VALUE			1~17
	BLC			OFF/ON
WHITE BALANCE	MODE	AUTO		
		INDOOR		
		OUTDOOR		
		USER	R-GAIN	1 ~ 256
			B-GAIN	1 ~ 256
IMAGE SET	BRIGHTNESS			1 ~ 256
	CONTRAST			1 ~ 256
	COLOR GAIN			1 ~ 256
	SHARPNESS			1 ~ 256
	NR			OFF/LOW/MIDDLE/HIGH
FUNC. SET	ENCODER LEVEL	SYNC		1 ~ 256
		BURST		100 ~ 200
		PEDESTAL		1 ~ 100
		WHITE		120 ~ 200
		BLACK&WHITE		OFF/ ON
	SYSTEM SETUP	OSD COLOR		BLUE/ORANGE/RED/YELLOW/BLACK
		OSD BG		OFF/ ON
		MIRROR		NONE/H/V/HV
		LANGUAGE		ENGLISH/CHINESE
		VERSION INFO		
		OVERWRITE DEF.		YES/NO
RESET				Reset to factory setting
SAVE & EXIT				Exit SETUP menu