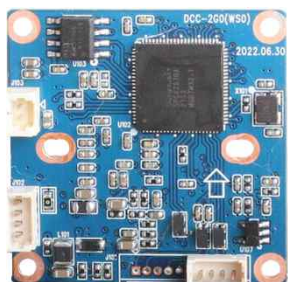
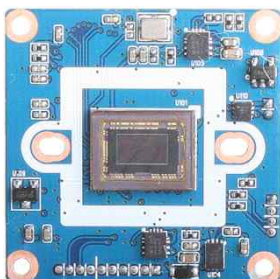


# DCC-2G0

## CMOS USB VIDEO MODULE

USB 2.0  
CAMERA

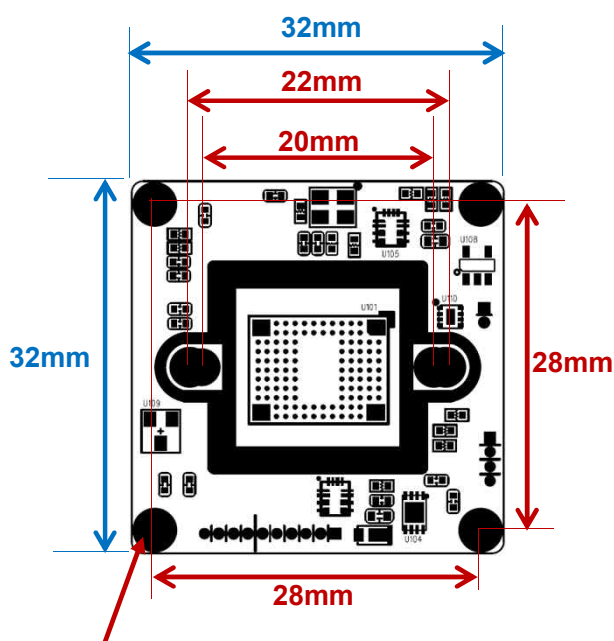


### Main Features

- 1/2.8" 2.9μm Pixel Progressive Sony Starvis CMOS Sensor
- 2 Mega Pixels – Maximum 1080p (1920x1080)
- Mountable Lens: Fixed IRIS
- Mechanical TDN ICR Available
- USB2.0 Compliant
- Best for ATM, Kiosk, POS, Face Recognition, Gaming Applications
- CMOS Video Module (32x32mm 1-board)



### Dimension



Ø3.8(2.1mm hole x 4)

PCB Coordinate

(-14, 14) (14, -14)

(14, 14) (-14, -14)

PCB T=1.2mm

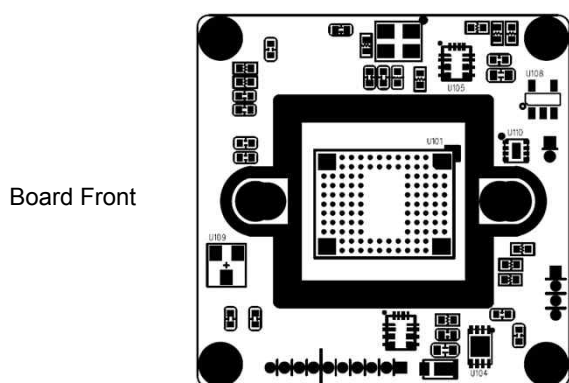
### Option

- OLPF, TDN ICR
- Lens
- USB Cable (USB2.0)
  - 70cm, 1.5m, 3m

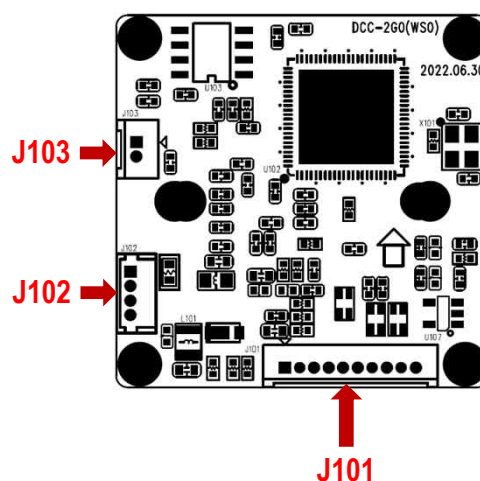
### Specification

Model	DCC-2G0	DCC-2G30
Signal System	MJPEG Encoded (USB2.0)	
Pickup Device	<b>1/2.8"(D-6.46mm) 2.12M Sony CMOS Sensor</b>	
Scanning System	Progressive Scan (16:9)	
Sync. System	Internal	
Total Pixels	2.16MP [1,945(H)x1,109(V)]	
Active Pixels	2.12MP [1,937(H)x1,097(V)]	
Min. Illumination	<b>0.1Lux, 0.05Lux (ICR on)</b>	
Mechanical ICR	<b>Available (Option)</b>	
Video Out	<b>MJPEG: 1080/720p/VGA/CIF</b>	
Capturing Speed	<b>Max. 25/30fps (50/60Hz)</b>	<b>Max. 50/60fps (50/60Hz)</b>
Lens	Fixed IRIS Lens	
Lens (Mount)	Board/Pinhole Mount(M12) & C/CS Mount	
OSD	N/A	
Exposure	Auto	
White Balance	Auto	
Day & Night Mode	Color, B/W or EXT (Factory Selectable),	
Gain Control	Auto	
Electronic Shutter	Auto	
Mirror	Off (Factory Default)	
Supported O/S	<b>UVC Compatible O/S</b> - Windows, Linux, Mac, Android etc.	
No. of Camera ID	Available	
Power Source	DC5V via USB	
Power Consumption	Less than 1.3 Watts (260mA @DC5V, w/o LED)	Less than 1.5 Watts (300mA @DC5V, w/o LED)
Operating Temp.	-10℃ ~ 55℃ (Humidity :0%RH ~ 90%RH)	
Size (mm)	32(W) x 32(D) – 1 Board	
Weight	5 g (Without OLPF)	

## Pin Connections

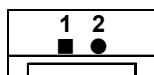


Board Front



Board Rear

## J103 – TDN ICR



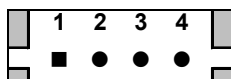
No.	Pin Item	No.	Pin Item
1	ICR (+)	2	ICR (-)

Wafer DIP type: **1.25mm pitch – 2 pin**

Manufacturer: **Yeonho**

MFG Part Number: **12512WS-02B**

## J102 – LED



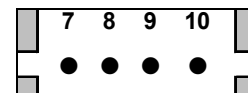
No.	Pin Item	No.	Pin Item
1	LED VCC	3	EXT_DN
2	GND	4	LED_CTL

Wafer DIP type: **1.25mm pitch – 4 pin**

Manufacturer: **Molex**

MFG Part Number: **53047-0410**

**J101**



No.	Pin Item	No.	Pin Item
7	<b>USB 5V</b>	9	<b>DP</b>
8	<b>DM</b>	10	<b>GND</b>

Wafer DIP type: **1.25mm pitch – 4 pin**

Manufacturer: **Molex**

MFG Part Number: **53047-0410**

( DCC-2G0 – USB2.0)