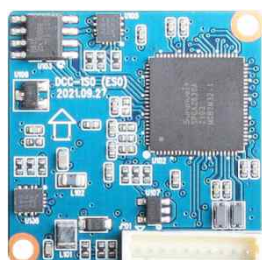
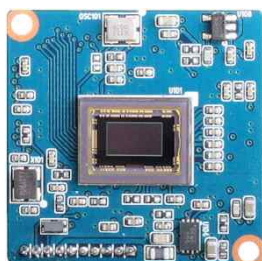


DCC-1S30

CMOS USB VIDEO MODULE

USB 2.0
CAMERA

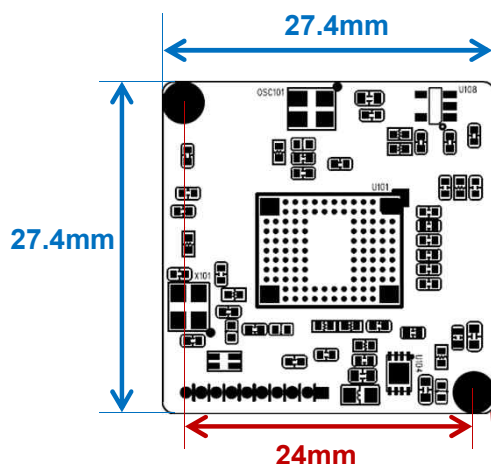


Main Features

- 1/2.8" 2.9μm Pixel Progressive Sony Starvis CMOS Sensor
- 2 Mega Pixels – Maximum 1080p (1920x1080)
- Fixed IRIS Lens Supported
- No Lens Mount Holder Available
- USB2.0 Compliant
- Best for ATM, Kiosk, POS, Face Recognition, Gaming Applications
- CMOS USB2.0 Video Module (27.4x27.4mm 1-board)



Dimension



Ø3.5(2.1mm hole x 2)
PCB Coordinate (-12, 12) (12, -12)

Specification

Model	DCC-1S0	DCC-1S30
Signal System	MJPEG Encoded (USB2.0)	
Pickup Device	1/2.8"(D-6.46mm) 2.12M Sony CMOS Sensor	
Scanning System	Progressive Scan (16:9)	
Sync. System	Internal	
Total Pixels	2.16MP [1,945(H)x1,109(V)]	
Active Pixels	2.12MP [1,937(H)x1,097(V)]	
Min. Illumination	0.1Lux	
Mechanical ICR	N/A	
Video Out	MJPEG: 1080/720p/VGA/CIF	
Capturing Speed	Max. 25/30fps (50/60Hz)	Max. 50/60fps (50/60Hz)
Lens	Fixed IRIS Lens	
Lens (Mount)	N/A	
OSD	N/A	
Exposure	Auto	
White Balance	Auto	
Day & Night Mode	Color (Factory Default)	
Gain Control	Auto	
Electronic Shutter	Auto	
Mirror	Off (Factory Default)	
Supported O/S	UVC Compatible O/S - Windows, Linux, Mac, Android etc.	
No. of Camera ID	N/A	
Power Source	DC5V via USB	
Power Consumption	Less than 0.9 Watts (180mA @DC5V)	
Operating Temp.	-10℃ ~ 55℃ (Humidity :0%RH ~ 90%RH)	
Size (mm)	27.4(W) x 27.4(D) – 1 Board	
Weight	4 g (Without OLPF)	

Option

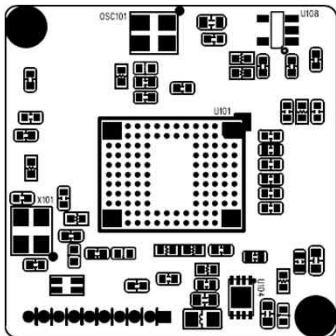
- OLPF
- USB Cable (USB2.0)
 - 70cm, 1.5m, 3m

DCC-1S30

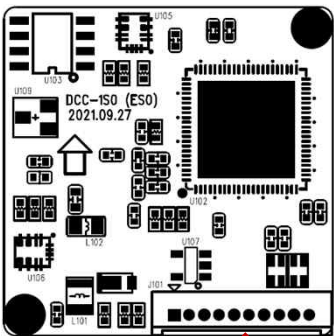
CMOS USB VIDEO MODULE

Pin Connections

Board Front

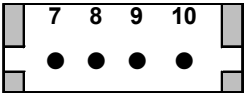


Board Rear



J101

J101



No.	Pin Item	No.	Pin Item
7	USB 5V	9	DP
8	DM	10	GND

Wafer DIP type: 1.25mm pitch – 4 pin
Manufacturer: **Molex**
MFG Part Number: **53047-0410**

(DCC-1S0 – USB2.0)
(DCC-1S30 – USB2.0)

