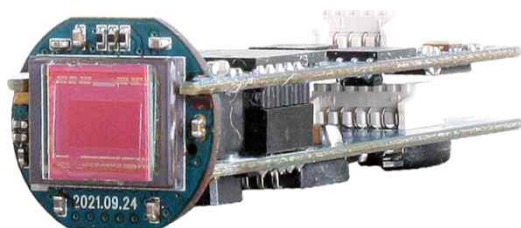


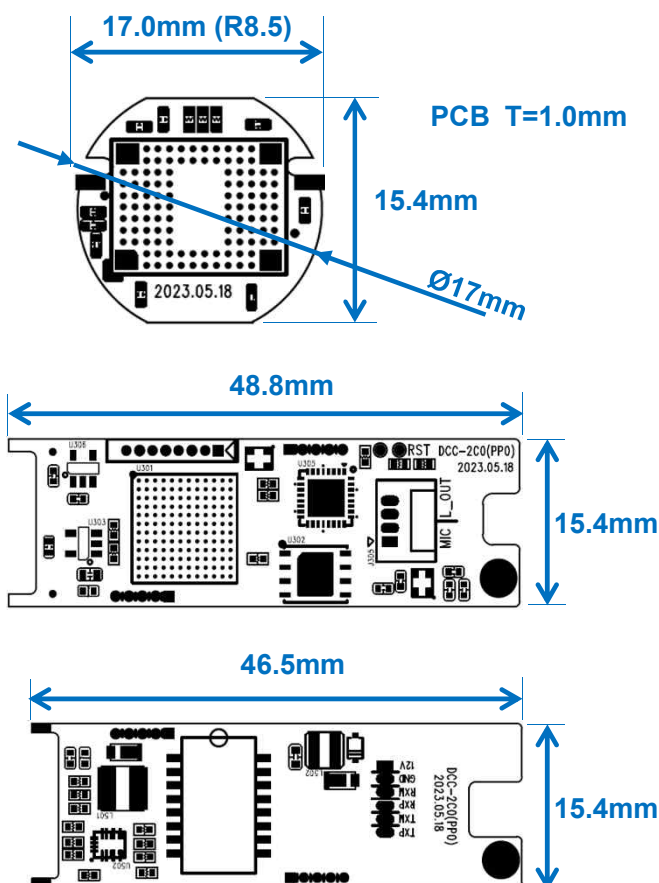
# DCC-2C0

## CMOS IP VIDEO MODULE

PARANTEK



### Dimension



### Option

- OLPF
- Wired E-microphone
- Cable with RJ45 or POE Dongle

### Main Features

- 1/2.8" 2.9μm Pixel Progressive Sony Starvis CMOS Sensor
- 2 Mega Pixels – Maximum 1080p (1920x1080)
- Mountable Lens: Fixed IRIS Lenses with miniature camera housings
- WDR, DSS, 3D-NR Supported conditionally
- Microphone or Line Audio Input / Line Audio Output
- Onvif Ver. 17.06 Compatible
- Supported Video Codec: H.264, MJPEG
- CMOS IP Video Module (17Ø & etc., 3-boards)



### Specification

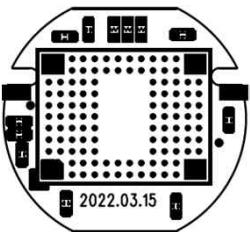
Model	DCC-2C0
Signal System	IP (Network)
Pickup Device	1/2.8"(D-6.46mm) 2.12M Sony CMOS Sensor
Scanning System	Progressive Scan (16:9)
Sync. System	Internal
Total Pixels	2.16MP [1,945(H)x1,109(V)]
Active Pixels	2.12MP [1,937(H)x1,097(V)]
Min. Illumination	0.1Lux, 0.003Lux (DSS on)
Mechanical ICR	N/A
Video Out 1 (RJ45)	Up to 30fps @ 1920x1080p (1920x1080, 1280x720, 800x600, 704x480, 704x400, 640x480, 640x360, 320x240)
Video Out 2	N/A
Lens	Option
Lens (Mount)	N/A (Need a case with a lens holder)
OSD	Via Webpage Viewer
Camera Title	Off, On(Max. 8 Characters)
Language	English
White Balance	AUTO, AUTOext, Preset, Manual
BLC	Off, BLC, HLC, WDR(Low, Middle, High) WDR can't work together with 3D-NR or DSS
Day & Night Mode	Auto, Color, B&W
Electronic Shutter	1/25(30)~1/30,000sec
Noise Reduction	Off, On(Low, Middle, High) DNR can't work together with WDR or DSS
DSS(Sens-up)	X32 DSS can't work together with 3D-NR or WDR
Mirror	Off, On(Mirror, Flip)
Other Features	Motion Detection(4 Zones), Privacy Mask(8 Zones), Defog. Gamma Etc.
Network Protocol	TCP/IP, UDP/IP, RTP, RTSP, RTCP, NTP, HTTP DHCP, FTP, SMTP, DNS, DDNS Onvif 17.06 Compatible
At-a-time Access	Maximum 3 users
Video Codec	H.264, MJPEG (Duplex Streaming)
Sensor In/Alarm Out	N/A
Audio In/Out	Microphone or Line Input (G.711) / Line Audio Output
Power Source	DC12V / POE
Power Consumption	Less than 1.6 Watts (130mA)
Operating Temp.	-10℃ ~ 55℃ (Humidity :0%RH ~ 90%RH)
Size (mm)	17Ø and etc. 3-boards
Weight	7.5 g (Without OLPF)

# DCC-2C0

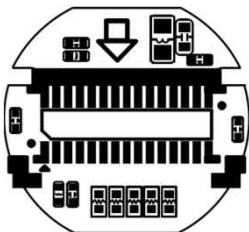
## CMOS IP VIDEO MODULE

### Pin Connections

Sensor Board  
Top

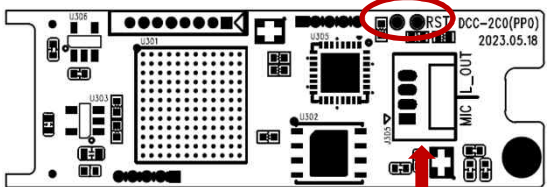


Sensor Board  
Bottom

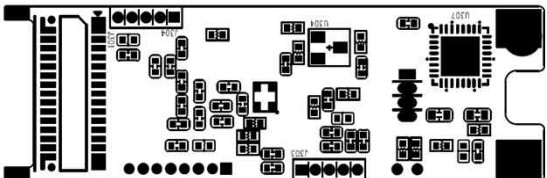


TP: Reset

ISP Board  
Top

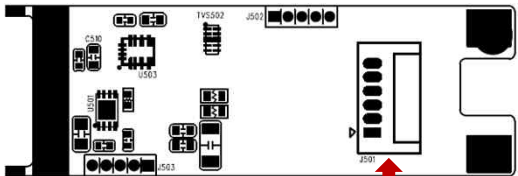


ISP Board  
Bottom

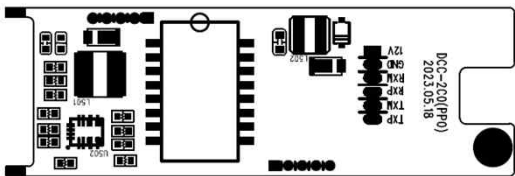


J305

Power Board  
Top

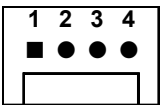


Power Board  
Bottom



J501

### J305



No.	Pin Item	No.	Pin Item
1	MIC IN	3	LINE OUT
2	GND	4	GND

Wafer DIP type: 1.25mm pitch – 4 pin

Manufacturer: **Molex**

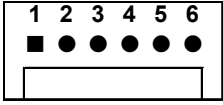
MFG Part Number: **53048-0410**

### TP



No.	Pin Item	No.	Pin Item
1	RESET (Factory Default)	2	GND

### J501



No.	Pin Item	No.	Pin Item
1	DC 12V	4	RXD + (Ethernet)
2	GND	5	TXD – (Ethernet)
3	RXD – (Ethernet)	6	TXD + (Ethernet)

Wafer DIP type: 1.25mm pitch – 6 pin

Manufacturer: **Molex**

MFG Part Number: **53048-0610**

## CMOS IP VIDEO MODULE

### • IP camera connection

Connect LAN cable to RJ45 jack of camera

Connect the other end LAN cable to RJ45 jack of router or hub

If you are not using POE switcher to provide the power to the IP camera, connect regulated a DC12V power adaptor to the IP camera.

Wait for about 30 seconds until the camera initialization is completed

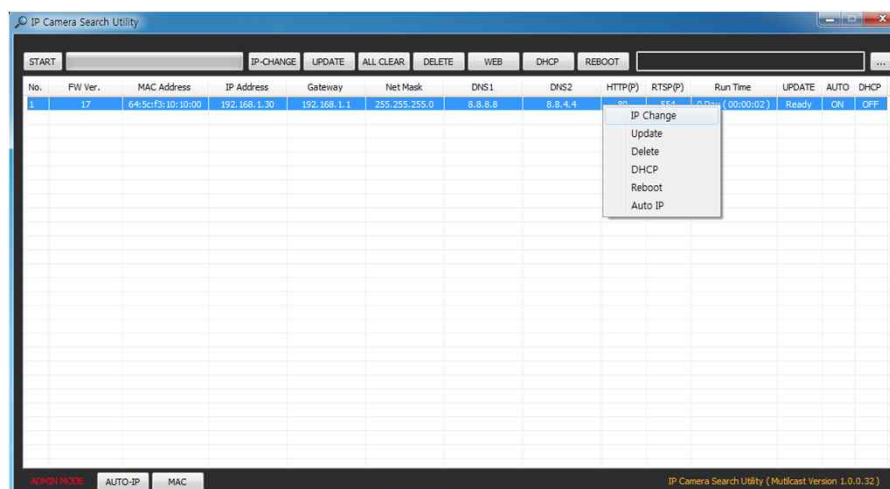
Factory Default IP address is **192.168.1.30**

Factory Default ID & Password are **admin / admin.**

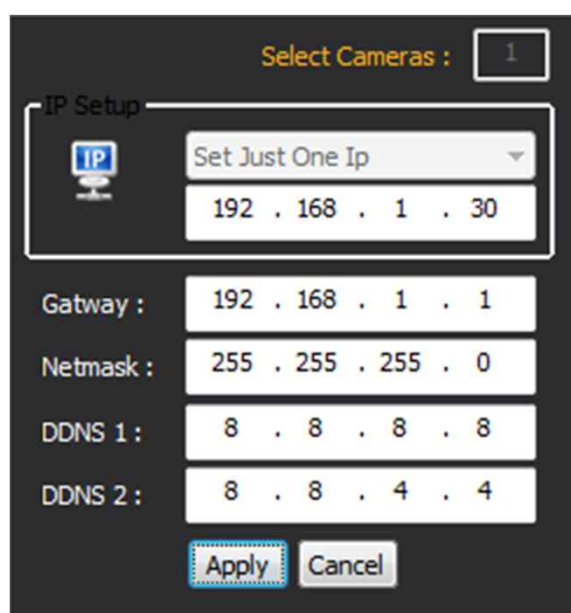
### • Using IP Search

You can simply change the IP address by using 'IP Search' provided.

Run IP Search as administrator. Click "START" button when the IP camera is connected to your PC or network, all IP address will appear.



Choose & change the IP address of camera you want to change and click "IP change"



After click the "IP Change" button left window will be appeared. Once you click "Apply" button, the camera will reboot for 10second.

After reboot the camera, the changed IP address will be applied and appeared.

### • Checking Video by Web Viewer

Run web browser and Input the IP address which taken from IP Search.

### • Supported O/S & Web Browser

- O/S : Windows7, 8, 10, MAC
- Browser : Internet Explorer 11 or higher, Chrome , Firefox, Safari, Opera