

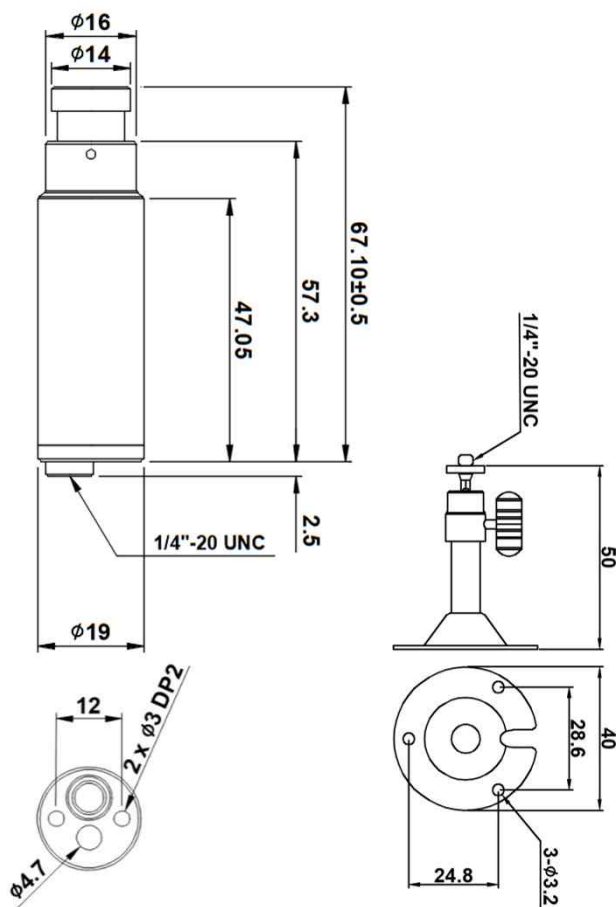
DIB-F1H0-8(P)

IP MINI BULLET CAMERA

PARANTEK



Dimension



Option

- Lens (Fixed)
f=1.1mm(Fish-eye 180°), 1.7mm, 2.1mm, 2.5mm, 2.8mm, 3.6mm, 4mm, 6mm, 12mm, 16mm, 25mm

Main Features

- 1/2.8" 2.9µm Pixel Progressive Sony Starvis CMOS Sensor
- 2 Mega Pixels – Maximum 1080p (1920x1080)
- Fixed Board Lens (f=8mm)
- WDR, DSS(Sens-up), 3DNR Supported
- Onvif Ver. 17.06 Compatible
- Supported Video Codec: H.264, MJPEG
- Built-in POE Cable
- Mini Bullet Housing(19Ø) with a stand bracket



Specifications

| Model | DIB-F1H0-8 | DIB-F1H0-8P |
|---------------------|--|--------------------------|
| Signal System | IP (Network) – RTOS | |
| Pickup Device | 1/2.8\"(D-6.46mm) 2.12M Sony CMOS Sensor | |
| Scanning System | Progressive Scan (16:9) | |
| Sync. System | Internal | |
| Total Pixels | 2.16MP [1,945(H)x1,109(V)] | |
| Active Pixels | 2.12MP [1,937(H)x1,097(V)] | |
| Min. Illumination | 0.1Lux, 0.003Lux (DSS on) | |
| Mechanical ICR | N/A | |
| Video Out (RJ45) | Up to 30fps @ 1920x1080p (1920x1080, 1280x720, 800x600, 704x480, 704x400, 640x480, 640x360, 320x240) | |
| Lens | Fixed f=8mm board type, F2.5 | |
| Lens (Mount) | Board type (M12) | |
| Angle of View | 46.5°(D), 39°(H), 22.5°(V) | |
| OSD | Via Webpage Viewer | |
| Camera Title | Off, On(Max. 8 Characters) | |
| Language | English | |
| White Balance | AUTO, AUTOext, Preset, Manual | |
| WDR | Off, On(Low, Middle, High) WDR can't work together with 3D-NR or DSS | |
| Day & Night Mode | Auto, Color, B&W | |
| Electronic Shutter | 1/25(30)~1/30,000sec | |
| Noise Reduction | Off, On(Low, Middle, High) 3D-DNR can't work together with WDR or DSS | |
| DSS(Sens-up) | X32 DSS can't work together with WDR or 3D-NR | |
| Mirror | Off, On(Mirror, Flip) | |
| Other Features | Motion Detection(4 Zones), Privacy Mask(8 Zones), Defog, Gamma Etc. | |
| Network Protocol | TCP/IP, UDP/IP, RTP, RTSP, RTCP, NTP, HTTP, DHCP, FTP, SMTP, DNS, DDNS Onvif 17.06 Compatible | |
| At-a-time Access | Maximum 3 users | |
| Video Codec | H.264, MJPEG (Duplex Streaming) | |
| Sensor In/Alarm Out | N/A | |
| Audio Line In/Out | N/A | |
| Power Source | DC12V | DC12V / POE |
| Power Consumption | Less than 1.6 Watts (130mA) | |
| Operating Temp. | -10℃ ~ 55℃ (Humidity :0%RH ~ 90%RH) | |
| Size (mm) | 19Ø (Bullet Diameter) x 70.5(L) | |
| Weight | 107 g (Gift-box packing) | 147 g (Gift-box packing) |

DIB-F1H0-8(P)

IP MINI BULLET CAMERA

• IP camera connection

Connect LAN cable to RJ45 jack of camera

Connect the other end LAN cable to RJ45 jack of router or hub

If you are not using POE switcher to provide the power to the IP camera, connect regulated a DC12V power adaptor to the IP camera.

Wait for about 30 seconds until the camera initialization is completed

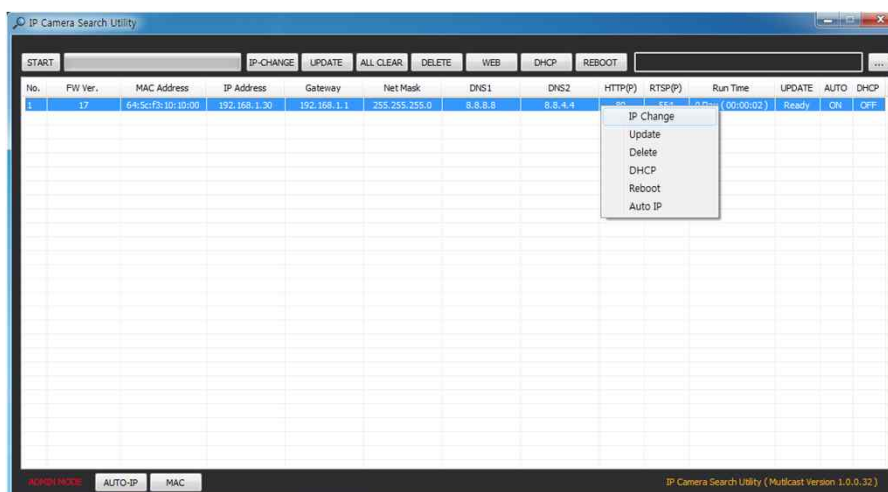
Factory Default IP address is **192.168.1.30**

Factory Default ID & Password are **admin / admin**.

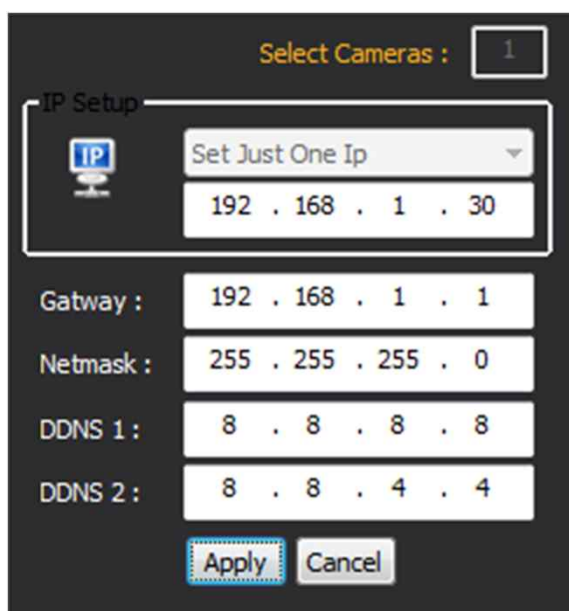
• Using IP Cam Search

You can simply change the IP address by using 'IP Cam Search' provided.

Run IP Cam Search as administrator. Click "START" button when the IP camera is connected to your PC or network, all IP address will appear. This program can be downloaded from the SUPPORT section of our web site at www.parantek.com.



Choose & change the IP address of camera you want to change and click "IP change"



After click the "IP Change" button left window will be appeared. Once you click "Apply" button, the camera will reboot for 10second.

After reboot the camera, the changed IP address will be applied and appeared.

• Checking Video by Web Viewer

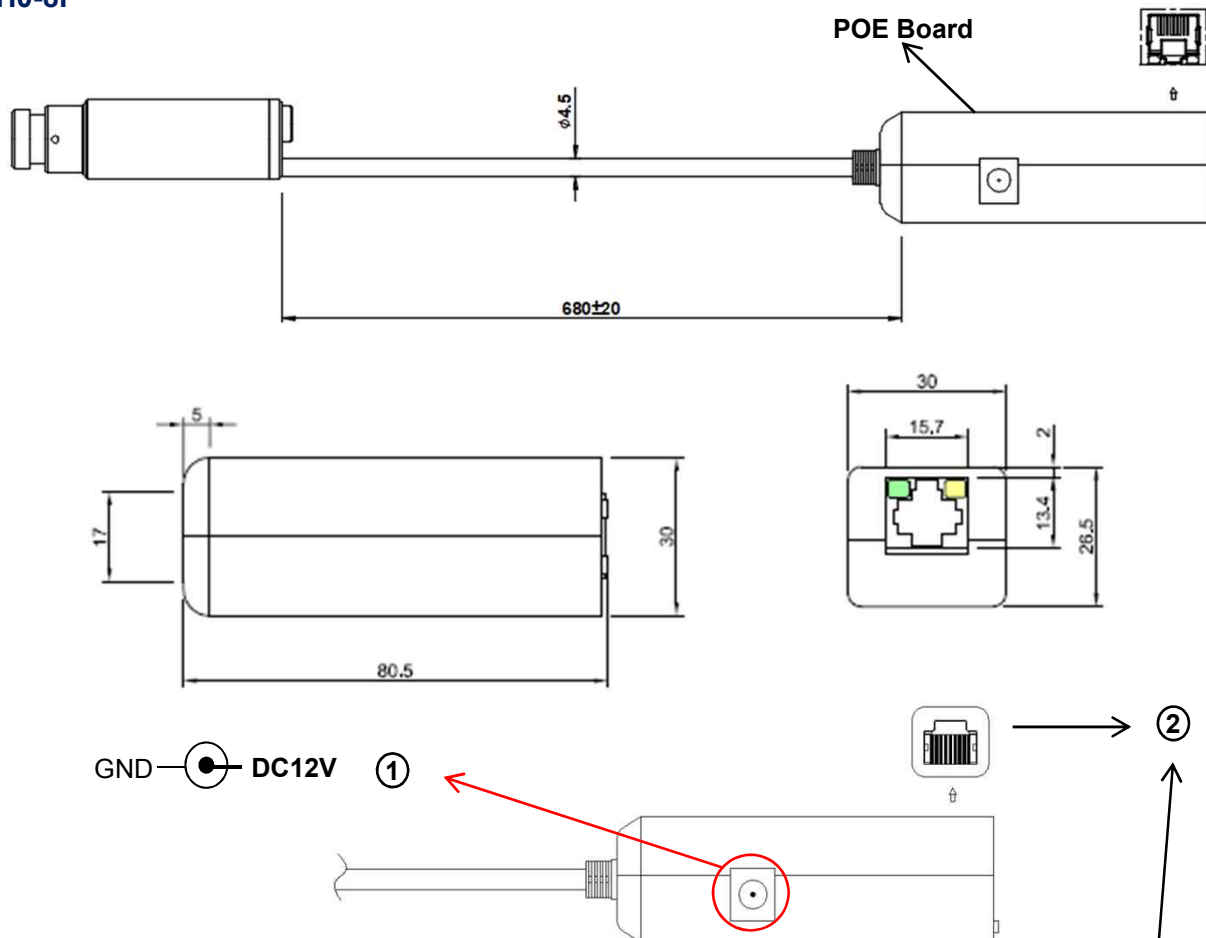
Run web browser and Input the IP address which taken from IP Search.

• Supported O/S & Web Browser

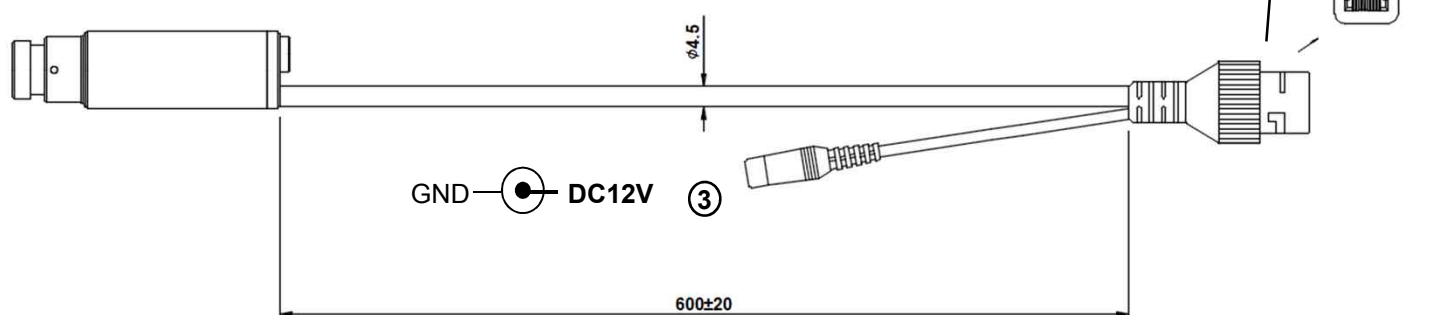
- O/S : Windows7, 8, 10, MAC
- Browser : Internet Explorer 11 or higher, Chrome , Firefox, Safari, Opera

Cable Connection Interface

DIB-F1H0-8P



DIB-F1H0-8



| | Function | I/O | Note | Remarks |
|---|-------------------|--------|---|---------|
| ① | POWER | IN | Camera power input (Not required when POE works) | DC12V |
| ② | VIDEO/POE/CONTROL | IN/OUT | H.264 video output, Power over Ethernet, Control (RJ45) | |
| ③ | POWER | IN | Camera power input (Required all the time) | DC12V |