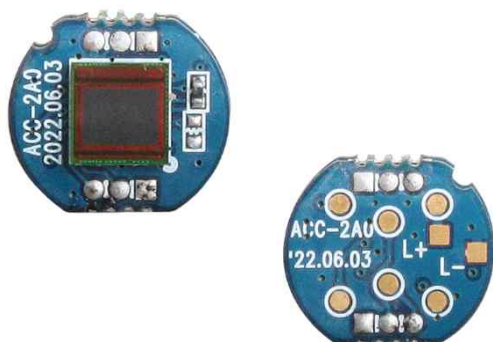


ACC-2A0

CMOS VIDEO MODULE

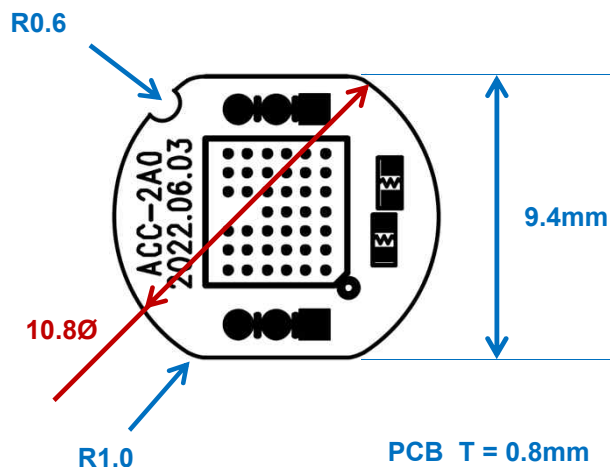


Main Features

- 1/4" 5.6μm Pixel Color CMOS Sensor
- Approx. 0.32 Mega Pixels
- Supported Lens: Fixed IRIS Lens
- 2D-DNR Supported
- Operation Voltage: DC3.3V
- CMOS Video Module (10.8Øx9.4mm 2-boards)



Dimension



Specification

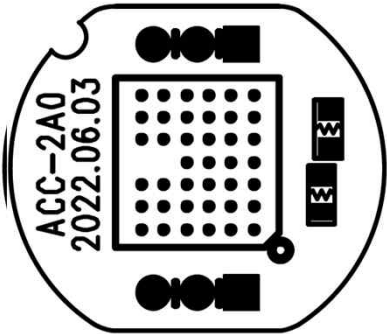
Model	ACC-2A0	
Signal System	NTSC	PAL
Pickup Device	1/4"(D-4.54mm) 0.32M CMOS Sensor	
Scanning System	Interlaced Scan (4:3)	
Sync. System	Internal	
Total Pixels	0.32MP [652(H)x504(V)]	
Active Pixels	0.31MP [648(H)x488(V)]	
Min. Illumination	0.45Lux(F2.5 - 30IRE)	
Mechanical ICR	N/A	
Video Out	CVBS (D1)	
Lens	Fixed IRIS Lens	
Lens (Mount)	N/A	
OSD	N/A	
Camera Title	N/A	
Language	N/A	
Exposure	AE, Manual	
White Balance	AUTO	
BLC	N/A	
Day & Night Mode	Color	
Gain Control	AUTO	
Electronic Shutter	AUTO	
DSS(Sens-up)	N/A	
Noise Reduction	2DNR	
Mirror	Off (Factory Selectable: Mirror, Flip)	
Other Features		
Communication	N/A	
Microphone	N/A	
Power Source	DC 3.3V	
Power Consumption	Less than 0.33 Watts (100mA@DC3.3V)	
Operating Temp.	-10℃ ~ 55℃ (Humidity :0%RH ~ 90%RH)	
Size (mm)	10.8Øx9.4 2-boards	
Weight	0.5 g	

ACC-2A0

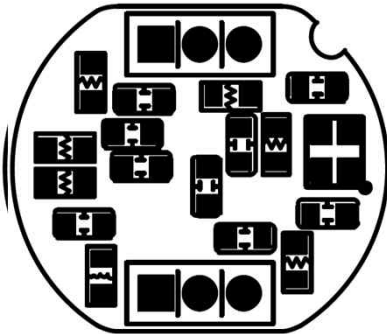
CMOS VIDEO MODULE

Pin Connections

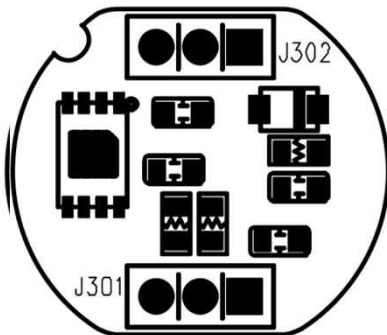
Sensor B/D Top



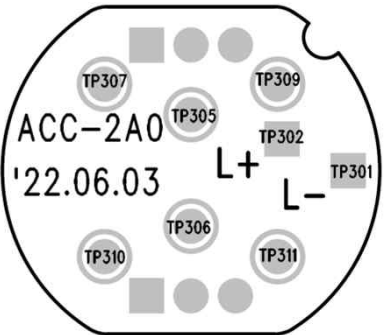
Sensor B/D Bottom



Interface B/D Top



Interface B/D Bottom



TP Pin Assignment

No.	Pin Item	Description
1	TP301	GND
2	TP302	COM
5	TP305	SCL
6	TP306	SDA
7	TP307	DC 3.3V
9	TP309	COM
10	TP310	VIDEO
11	TP311	GND