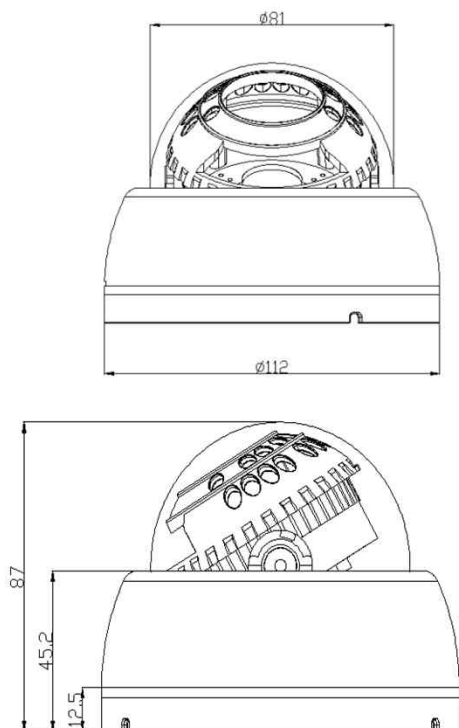


DID-RF962-4

IP INDOOR IR-DOME CAMERA



Dimension



Option

- Lens (Fixed)
f= 6mm, 8mm, 12mm, 16mm, 25mm

Main Features

- 1/2.8" 2.9µm Pixel Sony Starvis Progressive CMOS Sensor
- 2 Mega Pixels – Maximum 1080p (1920x1080)
- f=4mm M/P Lens (ICR)
- WDR, DSS(Sens-up), 3DNR Supported
- POE Interface Built-in
- Onvif Ver. 17.06 Compatible
- Supported Video Codec: H.264, MJPEG
- Indoor Dome Housing (80Ø)



Specifications

Model	DID-RF962-4
Signal System	IP (Network) – RTOS
Pickup Device	1/2.8"(D-6.46mm) 2.12M Sony CMOS Sensor
Scanning System	Progressive Scan (16:9)
Sync. System	Internal
Total Pixels	2.16MP [1,945(H)x1,109(V)]
Active Pixels	2.12MP [1,937(H)x1,097(V)]
Min. Illumination	0.1Lux, 0.003Lux (DSS on)
Mechanical ICR	N/A
Video Out (RJ45)	Up to 30fps @ 1920x1080p (1920x1080, 1280x720, 800x600, 704x480, 704x400, 640x480, 640x360, 320x240)
Lens	Fixed f=4mm board type, F2.5
Lens (Mount)	Board type (M12)
Angle of View	92.5°(D), 78°(H), 44.5°(V)
OSD	Via Webpage Viewer
Camera Title	Off, On(Max. 8 Characters)
Language	English
White Balance	AUTO, AUTOext, Preset, Manual
WDR	Off, On(Low, Middle, High) - 15(12) or 30(25) Output WDR can't work together with 3D-NR
Day & Night Mode	Auto, Color, B&W
Electronic Shutter	1/25(30)~1/30,000sec
Noise Reduction	Off, On(Low, Middle, High) - 30(25) or 60(50) Output DNR can't work together with WDR
DSS(Sens-up)	X32
Mirror	Off, On(Mirror, Flip)
Other Features	Motion Detection(4 Zones), Privacy Mask(8 Zones), Defog, Gamma Etc.
Network Protocol	TCP/IP, UDP/IP, RTP, RTSP, RTCP, NTP, HTTP DHCP, FTP, SMTP, DNS, DDNS Onvif 17.06 Compatible
At-a-time Access	Maximum 3 users
Video Codec	H.264, MJPEG (Duplex Streaming)
Sensor In/Alarm Out	N/A
Audio Line In/Out	N/A
Power Source	DC12V / POE
Power Consumption	Less than 5 Watts (410mA)
Operating Temp.	-10℃ ~ 55℃ (Humidity :0%RH ~ 90%RH)
Size (mm)	80Ø(Dome Diameter)
Weight	302 g (gift-box packing)

IP INDOOR IR-DOME CAMERA

• IP camera connection

Connect LAN cable to RJ45 jack of camera

Connect the other end LAN cable to RJ45 jack of router or hub

If you are not using POE switcher to provide the power to the IP camera, connect regulated a DC12V power adaptor to the IP camera.

Wait for about 30 seconds until the camera initialization is completed

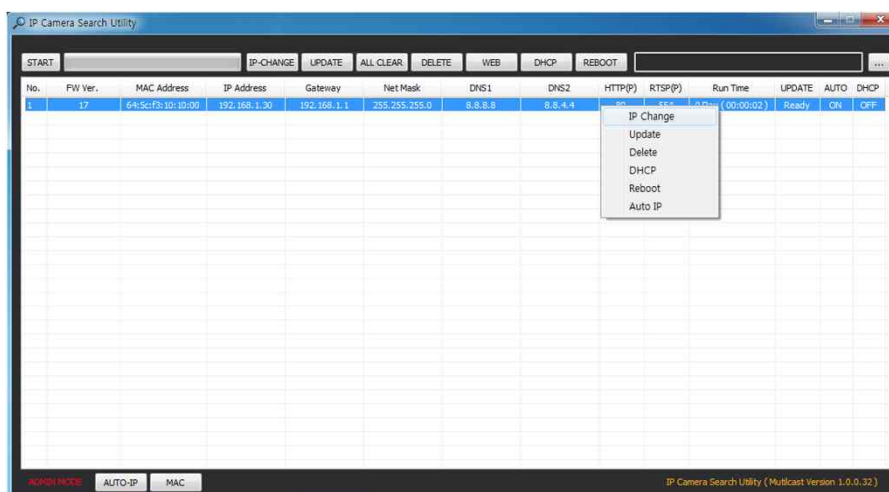
Factory Default IP address is **192.168.1.30**

Factory Default ID & Password are **admin / admin**.

• Using IP Cam Search

You can simply change the IP address by using 'IP Cam Search' provided.

Run IP Cam Search as administrator. Click "START" button when the IP camera is connected to your PC or network, all IP address will appear. This program can be downloaded from the SUPPORT section of our web site at www.parantek.com.



Choose & change the IP address of camera you want to change and click "IP change"



After click the "IP Change" button left window will be appeared. Once you click "Apply" button, the camera will reboot for 10second.

After reboot the camera, the changed IP address will be applied and appeared.

• Checking Video by Web Viewer

Run web browser and Input the IP address which taken from IP Search.

• Supported O/S & Web Browser

- O/S : Windows7, 8, 10, MAC
- Browser : Internet Explorer 11 or higher, Chrome , Firefox, Safari, Opera