

DID-RZ914

INDOOR IR-DOME IP CAMERA



Main Features

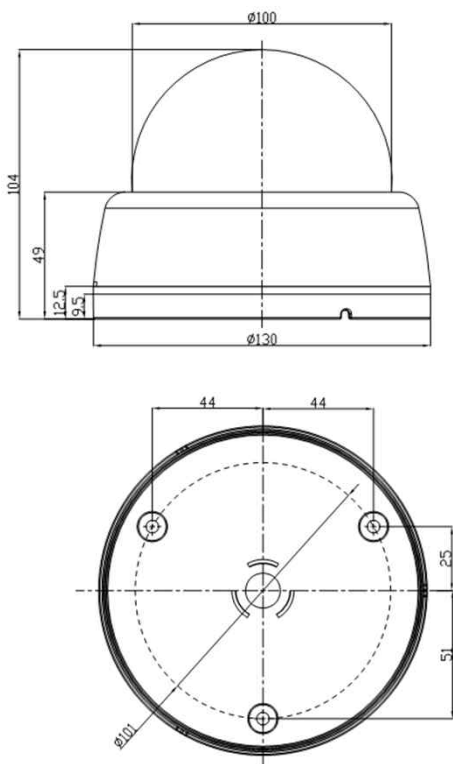
- 1/2.8" 2.9μm Pixel Sony Starvis CMOS Sensor
- 2Mega Pixels (Max. 1080p25/30)
- f=3.3~12mm M/P Lens (ICR, Stepping Motorized One-push AF)
- 30pcs of 850nm IR LEDs
- 3D-NR Supported
- POE Interface Built-in
- Onvif Ver. 17.06 Compatible with H.265, H.264 and MJPEG
- Indoor(100Ø) Dome Housing



Specifications

Model	DID-RZ914
Signal System	IP (Network) – Embedded Linux
Pickup Device	1/2.8"(D-6.46mm) 2.12M Sony CMOS Sensor
Scanning System	Progressive Scan (16:9)
Total Pixels	Internal
Active Pixels	2.16MP [1,945(H)x1,109(V)]
Min. Illumination	2.12MP [1,937(H)x1,097(V)]
No. of IRED	30pcs of 5Ø IR LED (850nm)
Video Out (RJ45)	Up to 30fps @ 1920x1080p (1920x1080, 1280x1024, 1280x960, 1280x720, 1024x768, 640x480, 320x240)
Lens	DC Auto ICR Vari-focal f=3.3~12mm, F1.4 Stepping Motorized One-push AF
Lens (Mount)	Board type (Ø14)
Angle of View	116°~36°(D), 91°~28° (H), 74.7°~21.2°(V)
OSD	Via Webpage Viewer
Camera Title	Off, On(Max. 10 Characters)
Language	English
Exposure	DC, Manual
White Balance	Auto(Indoor), Auto(Outdoor), Push, User
WDR	Off, On
Day & Night Mode	Auto, Day, Night, ICR Control
Electronic Shutter	1/(25)30~1/30,000sec
Noise Reduction	Off, On (2D-NR, 3D-NR)
DSS(Sens-up)	N/A
Mirror	Off, On(Mirror, Flip, Both)
Other Features	Motion Detection(432 Zones), Privacy Mask(16 Zones) etc
Network Protocol	TCP/IP, UDP/IP, RTP, RTSP, RTCP, NTP, HTTP DHCP, FTP, SMTP, DNS, DDNS Onvif 17.06 Compatible
At-a-time Access	Maximum 10 users
Video/Audio Codec	H.265, H.264, MJPEG / G.711 (Triplex Streaming)
Sensor In/Alarm Out	Option (1 / 1)
Audio Line In/Out	Option (1 / 1, Two-way Audio)
Power Source	DC12V / POE Built-in
Power Consumption	Less than 7.7Watts (640mA)
Operating Temp.	-10℃ ~ 55℃ (Humidity :0%RH ~ 90%RH)
Size (mm)	100Ø (Dome Diameter)
Weight	446 g (gift-box packing)

Dimension



Option

- Multi-functional Video Cable

DID-RZ914

INDOOR IR-DOME IP CAMERA

• IP camera connection

Connect LAN cable to RJ45 jack of camera

Connect the other end LAN cable to RJ45 jack of router or hub

If you are not using POE switcher to provide the power to the IP camera, connect regulated a DC12V power adaptor to the IP camera.

Wait for about 50 seconds until the camera initialization is completed

Factory Default IP address is **192.168.1.30**

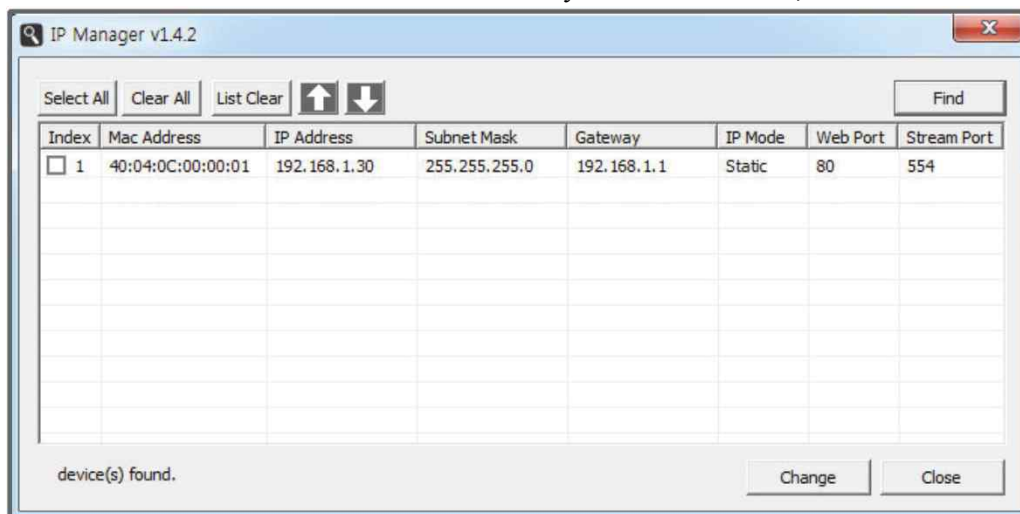
Factory Default ID & Password are **admin / admin.**

• Using IP manager

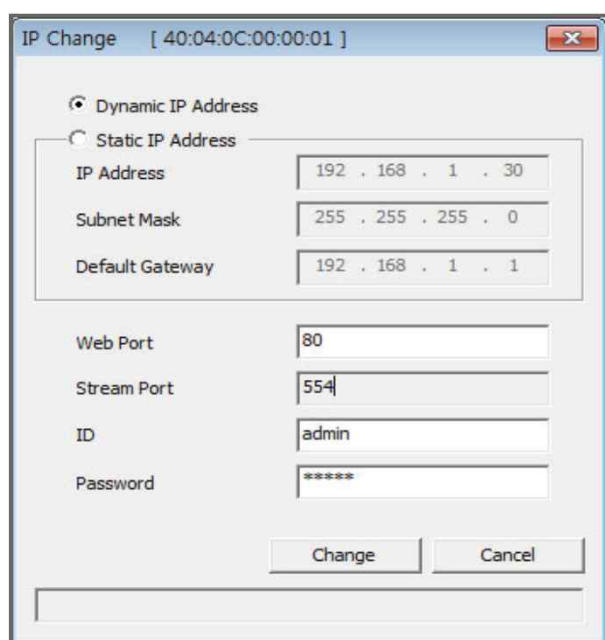
You can simply change the IP address by using 'IP Manager' provided.

Run IP manager as administrator.

click "Find" button when the IP camera is connected to your PC or network, all IP address will appear.



Choose & change the IP address of camera you want to change and click "change" Button



After click the "change" button left window will be appeared. Once you click "change" button, the camera will reboot for 10second.

After reboot the camera, the changed IP address will be applied and appeared.

• Checking Video by Web Viewer

Run web browser and Input the IP address which taken from IP manager.

• Supported O/S & Web Browser

- O/S : Windows7, 8, 10, MAC

- Browser : Internet Explorer 11 or higher, Firefox, Safari, Opera

* Monitoring videos can be operative only under IE with Active-X installation. Make sure to use an Administrator mode for installing Active-X.