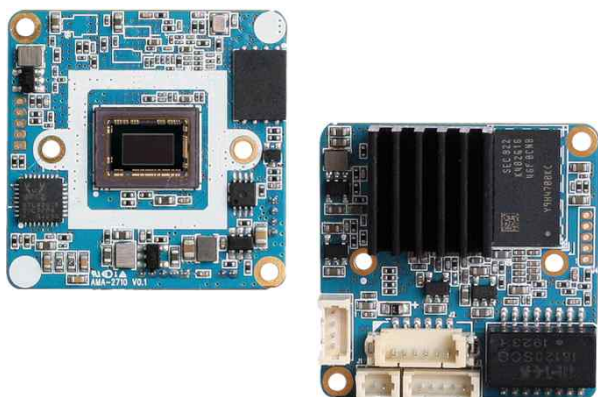


DCC-1D0

CMOS IP VIDEO MODULE



Main Features

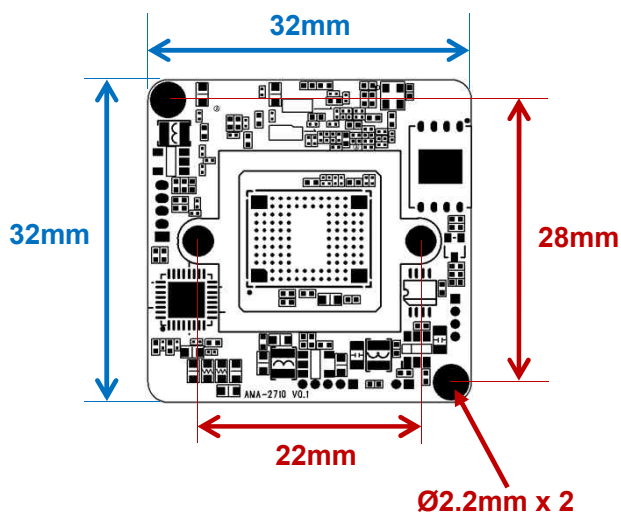
- 1/2.8" 2.9µm Pixel Progressive Sony Starvis CMOS Sensor
- 2Mega Pixels – Maximum 1080p (1920x1080)
- Mountable Lens: Fixed, Pinhole, Manual VF Lens
- TDN ICR Mechanism Available
- 3DNR Supported
- Onvif Ver. 17.06 Compatible
- Supported Video Codec: H.265, H.264, MJPEG



Specification

Model	DCC-1D0
Signal System	IP (Network)
Pickup Device	1/2.8"(D-6.46mm) 2.12M Sony CMOS Sensor
Scanning System	Progressive Scan (16:9)
Sync. System	Internal
Total Pixels	2.16MP [1,945(H)x1,109(V)]
Active Pixels	2.12MP [1,937(H)x1,097(V)]
Min. Illumination	0.1Lux, 0.05Lux (ICR on)
Mechanical ICR	Available (Option)
H-Resolution	More than 1,000TV Lines(H)
Video Out 1 (RJ45)	Up to 30fps @ 1920x1080p (1920x1080, 1280x1024, 1280x960, 1280x720, 1024x768, 640x480, 320x240)
Video Out 2	N/A
Lens	Option
Lens (Mount)	Board Mount(M12)
OSD	Via Webpage Viewer
Camera Title	Off, On(Max. 10 Characters)
Language	English, Japanese, Korean
White Balance	Auto(Indoor), Auto(Outdoor), Push, User
WDR	Off, On
Day & Night Mode	Auto, Day, Night, ICR Control
Electronic Shutter	1/25(30)~1/30,000sec
Noise Reduction	2DNR, 3DNR
DSS(Sens-up)	N/A
Mirror	Off, On(Mirror, Flip, Both)
Other Features	Motion Detection(432 Zones), Privacy Mask(16 Zones), Defog, Etc.
Network Protocol	TCP/IP, UDP/IP, RTP, RTSP, RTCP, NTP, HTTP DHCP, FTP, SMTP, DNS, DDNS Onvif 17.06 Compatible
At-a-time Access	Maximum 10 users
Video Codec	H.265, H.264, MJPEG (Triplex Streaming)
Sensor In/Alarm Out	N/A
Audio Line In/Out	N/A
Power Source	DC12V / POE
Power Consumption	Less than 1.7 Watts (140mA)
Operating Temp.	-10℃ ~ 55℃ (Humidity :0%RH ~ 90%RH)
Size (mm)	32(W) x 32(D) – 1 Board
Weight	9.5 g (Without OLPF)

Dimension



Option

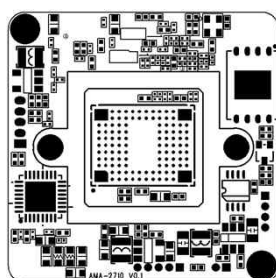
- OLPF
- Lens Holder
- Lens
- Mechanical TDN ICR
- POE Block Module

DCC-1D0

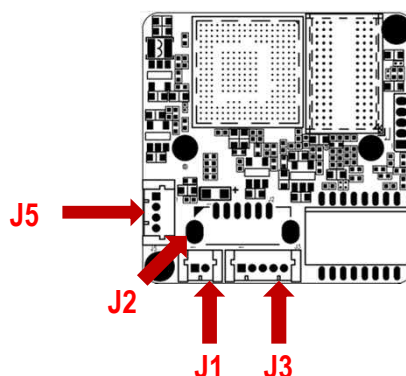
CMOS IP VIDEO MODULE

Pin Connections

Board Front



Board Rear



J2 – Power & LAN

No.	Pin Item	No.	Pin Item
1	VDD	2	GND
3	RDX-	4	RDX+
5	TDX-	6	TDX+

Wafer SMD type: 1.25mm pitch – 6 pin

Manufacturer: Yeonho

MFG Part Number: 12505WS-06

J3 – Status LED & POE

No.	Pin Item	No.	Pin Item
1	FACT	2	GND
3	VDD	4	CTDX
5	CRDX		

Wafer DIP type: 1.25mm pitch – 5 pin

Manufacturer: Yeonho

MFG Part Number: 12512WS-05

J5 – IR LED Board

No.	Pin Item	No.	Pin Item
1	DC12V	2	D&N OUT (TTL 3.3V)
3	EXT_DN (CDS)	4	GND

Wafer DIP type: 1.25mm pitch – 4 pin

Manufacturer: Molex / Yeonho

MFG Part Number: 53047-0410 / 12512WS-04

J2 – TDN ICR

No.	Pin Item	No.	Pin Item
1	ICR (+)	2	ICR (–)

Wafer DIP type: 1.25mm pitch – 2 pin

Manufacturer: Yeonho

MFG Part Number: 12512WS-02B

CMOS IP VIDEO MODULE

• IP camera connection

Connect LAN cable to RJ45 jack of camera

Connect the other end LAN cable to RJ45 jack of router or hub

If you are not using POE switcher to provide the power to the IP camera, connect regulated a DC12V power adaptor to the IP camera.

Wait for about 50 seconds until the camera initialization is completed

Factory Default IP address is **192.168.1.30**

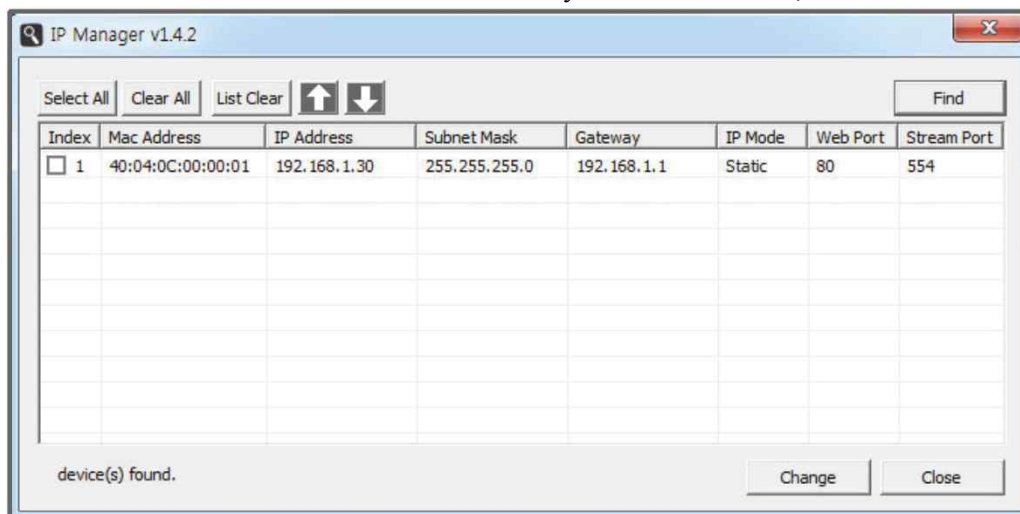
Factory Default ID & Password are **admin / admin.**

• Using IP manager

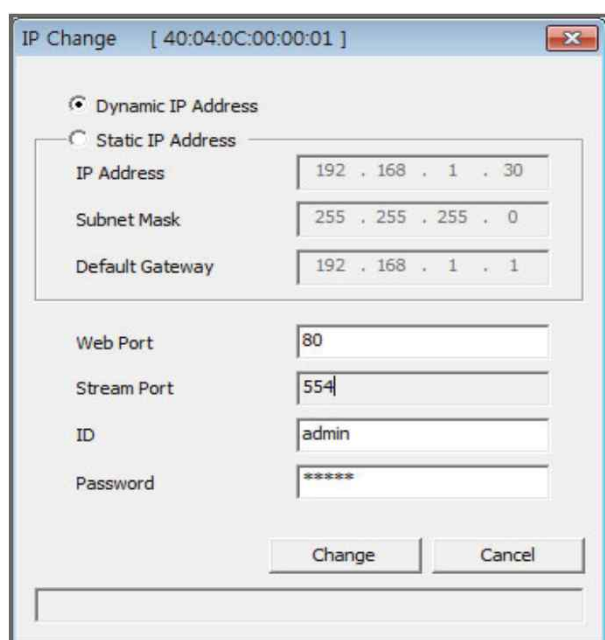
You can simply change the IP address by using 'IP Manager' provided.

Run IP manager as administrator.

click "Find" button when the IP camera is connected to your PC or network, all IP address will appear.



Choose & change the IP address of camera you want to change and click "change" Button



After click the "change" button left window will be appeared. Once you click "change" button, the camera will reboot for 10second.

After reboot the camera, the changed IP address will be applied and appeared.

• Checking Video by Web Viewer

Run web browser and Input the IP address which taken from IP manager.

• Supported O/S & Web Browser

- O/S : Windows7, 8, 10, MAC

- Browser : Internet Explorer 11 or higher, Firefox, Safari, Opera

* Monitoring videos can be operative only under IE with Active-X installation.